

FRANKFORD

exceptional shade

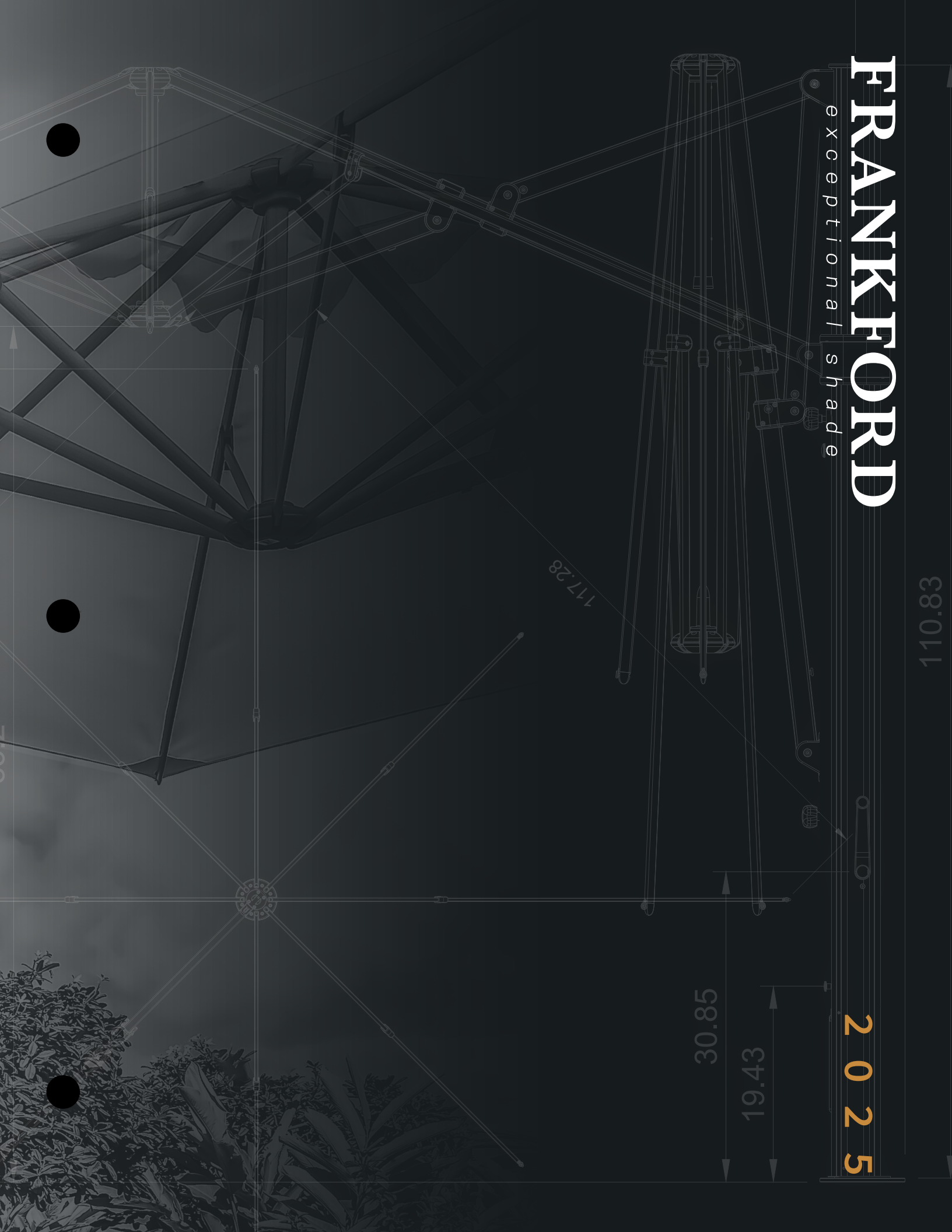
110.83

2025

30.85

19.43

117.28



A large green patio umbrella is the central focus, partially open, casting a shadow over outdoor furniture. The background is a lush green garden with various plants and trees. The overall scene is bright and sunny, suggesting a pleasant outdoor environment.

We invite you to experience exceptional shade.

Frankford has been in the shade business for more than 120 years, providing superior quality umbrellas to the contract and retail industries. We are a dynamic and thriving company in the outdoor living industry, specializing in modern and traditional shade solution designs. Known primarily for providing hotels, resorts, and restaurant chains with durable and long-lasting umbrellas, Frankford Umbrellas have become a staple in not only thousands of commercial settings throughout Canada, the United States, Mexico and the Caribbean but also countless residential settings.

The beauty, design, and superior elements of our umbrellas allow you to bring home the enhanced resort and dining experience, to your cherished outdoor living space. We use only the highest quality materials in manufacturing our umbrellas, and they truly are the best in the industry. We believe in providing our partners an exceptional product, at a reasonable price, with superior customer service.

Precisely crafted, our umbrellas are built to withstand the harshest conditions. Our procedures and inventory systems constantly evolve to ensure we meet all the expectations of our clients. Our ultimate goal is to exceed your expectations. This goal has generated thousands of long-lasting relationships with commercial and residential clients alike. So, while it is typically years before our customers need to return, they always do.

Whether you're a country club, resort and spa, or a family that enjoys your outdoor space as much as your indoor space, once you've experienced our umbrellas, and more importantly our personal commitment to satisfying the needs of our customers, we are confident you will become a customer for life. Find your perfect umbrella through one of our valued dealers or at a retail store near you.







FRANKFORD
exceptional shade

frankfordumbrellas.com

WIND RATINGS

Wind ratings do NOT form any part of, nor fall under, any of Frankford Umbrellas' warranties. Wind ratings are intended as a guide to the relative strength of the umbrellas only and tested at their optimal positions. Umbrellas with any degree of tilt should not follow the below ratings. Wind can be extremely variable, depending on the surroundings, elevation, gusts, etc.

In any high wind or sudden extreme weather conditions, all umbrellas should be closed and secured immediately, regardless of size, weight, or base weight and never be left unattended in the open position. This will reduce the risk of damage to your umbrella, furniture, and property.

Frankford Umbrellas have been tested successfully in extreme weather and winds up to 40-50 mph. However, we strongly recommend closing your umbrella when not in use or when sustained winds exceed 25 mph.

If using our umbrellas on a rooftop or an elevated patio above the ground level of the property, published wind ratings do not apply. We strongly recommend increasing minimum suggested base weights by double or triple.

Our umbrellas, in the opened or closed position, when using a surface base, should be closed and stored when not in use. This is to ensure that high winds do not cause the umbrella to fall over and cause injury or property damage. Failure to take these precautions will void all manufacturer warranties.

Frankford can recommend specific bases and anchoring systems for specific umbrellas (pg. 44). However, these are only recommended weights as different environments may require different base options. Umbrellas must be secured to a sufficiently weighted umbrella base.

Please contact us for assistance in choosing the proper umbrella base or anchoring system. In the event Frankford shade products are left open and/or unattended in harsh weather conditions, our customer service department is here to help you and promptly assist with parts for repairs. Our shade products offer modular, self-repairable components which allow customers to service the umbrellas to keep them in perfect working condition.

ECLIPSE® CANTILEVER

- Engineered to withstand 30 mph sustained winds.
- Wind Stabilizer Kit +5 mph (35 mph)

ECLIPSE RECTANGLE SPECIFIC

- Engineered to withstand 15 mph sustained winds.
- Wind Stabilizer Kit +5 mph (20 mph)

AURORA CANTILEVER

- Engineered to withstand 25 mph sustained winds.
- Wind Stabilizer Kit +5 mph (30 mph)

AURORA FIBERGLASS CANTILEVER

- Engineered to withstand 30 mph sustained winds.

NOVA GIANT TELESCOPING

- Engineered to withstand 50 mph sustained winds.

MARELLA CABANA (w/full accent curtains only)

- Engineered to withstand 35 mph sustained winds.

G-SERIES GIANT MARKET

- **GREENWICH**: Engineered to withstand 30 mph sustained winds.
- **MONTEREY**: Engineered to withstand 35 mph sustained winds.

MONTEREY FIBERGLASS MARKET

- Engineered to withstand 40 mph sustained winds.

MONTEREY RECTANGLE SPECIFIC (876/882)

- Engineered to withstand 25 mph sustained winds.

GREENWICH ALUMINUM MARKET

- Engineered to withstand 30 mph sustained winds.



ECLIPSE DESIGNER ALUMINUM CANTILEVER

10ft. X 10ft. Square Designer Aluminum Cantilever Umbrella / **MS** - Brushed Silver Finish
Recasens® R-099 White (**GRADE A**) 9oz. Marine Grade Acrylic Fabric
Mounting: **36G-SQx3** - Eclipse® Specific Square Galvanized Plate Triple Stack (600 lbs.)



883ECU-SQ-MS-R099







MONTEREY PULLEY LIFT FIBERGLASS MARKET

9ft. Octagon Fiberglass Market Umbrella • 1.5" Diameter Pole-Pulley Lift / **BK** - Onyx Finish
BF - Classic Ball Finial

Recasens® R-554 Yellow (**GRADE A**) 9oz. Marine Grade Acrylic Fabric

Mounting: **100A-BZ+8ST** - 100 lbs. Premium Aluminum Shell Base + 8" Stainless Steel Stem

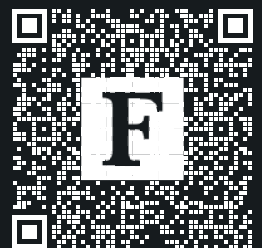


854FM-BK-R554



883ECU-SQ-MS SHADE DESIGNER CUSTOM

Eclipse® 10ft. x 10ft. Square Designer Aluminum Cantilever Umbrella / **MS** - Brushed Silver Finish
Recasens® R-099 White /Recasens® R-241 Phoenix 6" Trim" (**Grade A+**)
Mounting: **40Gx3** - Eclipse® Specific Galvanized Plate Triple Stack (555 lbs.)



Visit our Shade Designer

SHADE DESIGNER



The Shade Designer™ is an immersive 3D digital space that allows you to design your own umbrella and interact with your unique creation. Choose from hundreds of fabrics colors and patterns, multiple canopy styles, and finishing additions like various trim styles and custom binding.



P.01

ECLIPSE® **ECU**
Designer Aluminum Cantilever

P.05

AURORA **ARU**
Premium Aluminum Cantilever

P.09

AURORA **ARU-F**
Premium Fiberglass Cantilever

P.11

NOVA **NGU**
Giant Telescoping Market

P.15

MARELLA **MLA**
Cabana Pavillion

P.19

G-SERIES **CAM**
Giant Aluminum Market

P.21

G-SERIES **FM**
Giant Fiberglass Market

P.25

GREENWICH **CAM**
Designer Aluminum Market

P.31

MONTEREY **FM**
Pulley Lift Fiberglass Market

P.33

MONTEREY **FMC**
Crank Lift Fiberglass Market

P.35

MONTEREY **FMA**
Crank Auto Tilt Fiberglass

P.37

RECASENS Recacril®
Fabric Introduction

P.39

GRADE A
Frankford Stock Fabrics

P.41

GRADE A+
Non-Stocking Recasens Fabrics

P.43

BASES / MOUNTS
Base / Finishes Introduction

P.44

BASE GUIDE
Base Recommendations

P.45

RESIN/ALU./STEEL
Table and Free-Standing Bases

P.47

GAL. PLATES
Galvanized Steel Plate Bases

P.48

GAL. PLATE COVERS
Top Covers

P.49

SPECIALTY MOUNTING
Surface and In-Ground

P.50

LED CLIPS/LIGHTS

P.51

RESIDENTIAL
Warranties and Disclaimers

P.52

COMMERCIAL
Warranties and Disclaimers

P.53

SHIPPING/RETURNS
Procedures and Disclaimers

P.54

CARE/MAINTENANCE
General Maintenance/Fabric Care



Table Of Contents



ECLIPSE DESIGNER ALUMINUM CANTILEVER

10ft. X 10ft. Square Designer Aluminum Cantilever Umbrella / **WG** - Golden Oak Finish
Recasens® R-099 White (**GRADE A**) 9oz. Marine Grade Acrylic Fabric
Mounting: **DP-SS** - Eclipse®/Aurora Specific Stainless Steel Surface Deck Plate



883ECU-SQ-WG-R099



This umbrella combines style with size, strength, and durability to provide a lasting solution to your shade needs. Its 360° rotation and Infinity Tilt allow for easy opening and closing while providing complete shade flexibility. Heavy-gauge extruded aluminum and stainless steel parts on a marine-grade, corrosion-resistant aluminum frame ensure the Eclipse® is ideal for both commercial and residential environments.

Mast Diameter: **3.3"x5"**/8x12.7cm

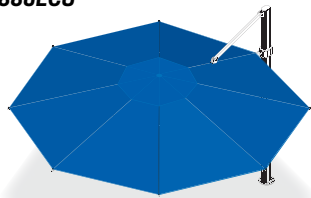
Advertised dimensions have a +/-6" tolerance based on the pitch angle of the umbrella rib, pin placement, and fabric tautness. Base selection will also effect overall heights and clearances.



ECLIPSE® Cantilever Features/Details

- 360° Mast rotation (16 locking positions every 22.5°)
- Canopy Infinity Tilt provides countless hours of maximum shade.
- Automatic tilt locking for safety.
- Smooth commercially rated crank lift operation.
- Extruded aluminum mast and ribs.
- Stainless steel hardware throughout.
- Black Polyester Protective Cover Bag included.
- **Engineered to withstand sustained 30 mph winds. (898ECU-R: 15 mph)**
- **Wind Stabilization Kit adds 5mph**

880ECU



13ft./4m Octagon

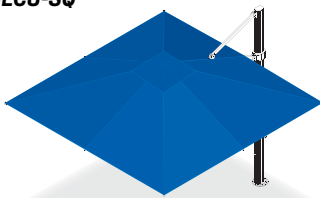
A **81.3"**/206.5cm

B **32"**/81cm

C **163"**/414cm

Weight: **112 lbs.**/51 kg.

883ECU-SQ



10ft. x 10ft. /3m Square

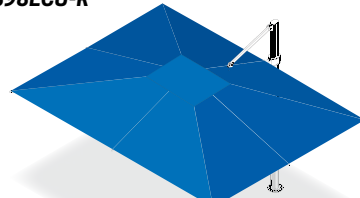
A **85"**/216cm

B **26.7"**/67.8cm

C **133.75"**/339.8cm

Weight: **108 lbs.** /49 kg.

898ECU-R



10ft. x 13ft. /3m x 4m Rectangle

A **84.2"**/213.8cm

B **12.9"**/33cm

C **130"**/330cm

Weight: **115 lbs.** /52 kg.

Frame Finishes

★ **FINISH DISCLAIMER:** See current MSRP for Up-charge (+MSRP)



Brushed Silver



Golden Oak



Heather Willow



Onyx



Alpine White



Desert Bronze



Carbon

ECLIPSE® CANTILEVER SPECIFIC MOUNTING OPTIONS

★ **FINISH DISCLAIMER:** See current MSRP for Up-charge (+MSRP)

Bases have a +/- 10 lbs. (4.5 kg.) tolerance based on a variety of variables. Dimensions +/- 1-2".

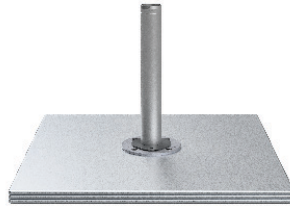
We recommend to consult a licensed professional before installing all in-ground and direct surface installations.



40Gx3 Galvanized Steel Stack ●

- Weight: **555 lbs./252 kg.**
- Dimensions: **40"**/101cm • **1.5"**/3.8cm
- Free-Standing Use
- Add **40G-TC**

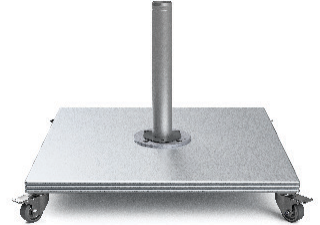
Required minimum galvanized stack for the Eclipse® Cantilever.



36G-SQx3 Galvanized Plate Stack ●

- Weight: **600 lbs./272 kg.**
- Dimensions: **36"**/91cm • **1.5"**/3.8cm
- Free-Standing Use
- Add **36G-SQ-TC**

Required minimum galvanized stack for the Eclipse® Cantilever.



36G-SQx3+W Galvanized Steel Stack ●

- Weight: **614 lbs./279 kg.**
- Dimensions: **36"**/91cm • **6"**/15.2cm
- Free-Standing Use **/+W**
- Add **36G-SQ-TC**

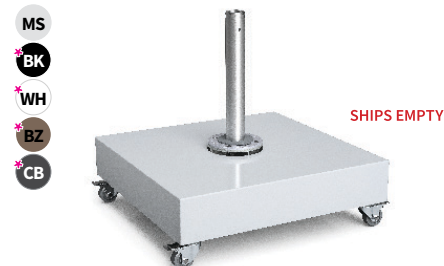
Required minimum galvanized stack for the Eclipse® Cantilever.



NGU550 Galvanized Steel Max Base

- Weight: **550 lbs./249 kg.**
- Dimensions: **45"**/114cm • **5"**/12.7cm
- Powder Coated Aluminum Cover
- Free-Standing Use

Commercial use and large areas.

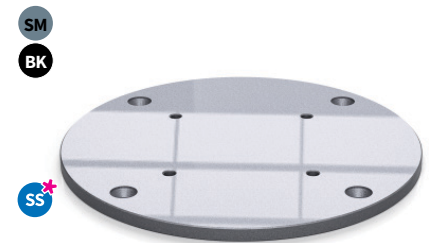


480 Base (includes wheels and feet)

- Weight: **80 lbs./36 kg.**
- Dimensions: **34"**/86cm • **6.5"**/16.5cm
- Wheels increase height **5"**/12.7cm
- Powder Coated Aluminum Cover
- Free-Standing Use **RESIDENTIAL ONLY**

PAVERS NOT INCLUDED

(12) 16" x 16" Pavers (35 lbs. Min ea.)
+/- 20 lbs. minimum **480 lbs./217 kg.**

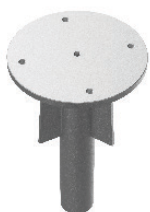


DP Direct Surface Mounting Plate

- Weight: **12 lbs./5 kg.**
- Dimensions: **12.5"**/32cm • **.5"**/12.7mm
- Surface Installation
- **SS Upgrade Available DP-SS** ★

Direct surface mounting plate for decking or concrete.

Installation hardware not included.

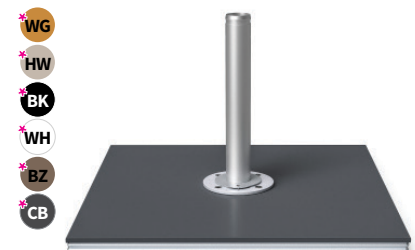


IG In-Ground Mount ●

- Weight: **18 lbs./8.5 kg.**
- Dimensions: **8.5"**/21cm • **14"**/35cm
- In-Ground Installation

In-ground mounting into soft soil or concrete.

Installation hardware not included.



GALVANIZED PLATE Top Cover

Aluminum top covers for Galvanized Plates.

If being used on a plate stack, the cover will only be used on the top plate.



AURORA PREMIUM ALUMINUM CANTILEVER

11ft. Octagonal Premium Aluminum Cantilever Umbrella / **MS** - Brushed Silver Finish
Recasens® R-017 Black Stripe (**GRADE A**) 9oz. Marine Grade Acrylic Fabric
Mounting: **DP-BK** - Deck Plate (**BK** - Onyx)



868ARU-MS-R017



AURORA/AURORA-F

PREMIUM ALUMINUM/FIBERGLASS CANTILEVERS

Maximize your space without a traditional center post. The Aurora is manufactured using the most durable materials and fabric available to provide years of trouble-free use and enjoyment. Its Infinity Tilt allows you to change positions effortlessly. This modern cantilever is suitable for use in low to moderate wind conditions and ensures hours of protection from the sun and light rain.

Mast Diameter: **2.75"x4"**/7x10cm

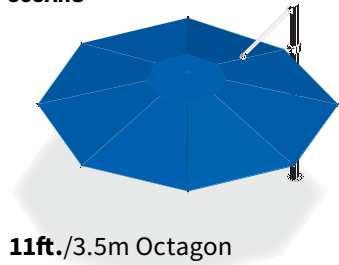
Advertised dimensions have a +/-6" tolerance based on the pitch angle of the umbrella rib, pin placement, and fabric tautness. Base selection will also effect overall heights and clearances.



AURORA Cantilever Features/Details

- 360° Mast rotation (16 locking positions every 22.5°)
- Canopy Infinity Tilt provides countless hours of maximum shade.
- Smooth commercially rated crank lift operation.
- Extruded aluminum mast and ribs.
- Stainless steel hardware throughout.
- Black Polyester Protective Cover Bag included.
- **Engineered to withstand sustained 25 mph winds.**
- **Wind Stabilization Kit adds 5mph**

868ARU



11ft./3.5m Octagon

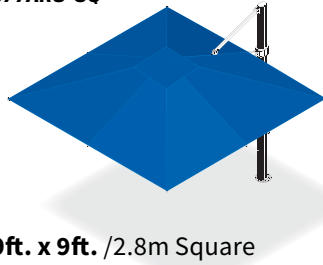
A 81.3"/206.5cm

B 37"/93cm

C 142"/361cm

Weight: **95 lbs./43 kg.**

877ARU-SQ



9ft. x 9ft. /2.8m Square

A 82"/208cm

B 29"/73cm

C 122"/310cm

Weight: **90 lbs. /40 kg.**

Frame Finishes

★ **FINISH DISCLAIMER:** See current MSRP for Up-charge (+MSRP)



Brushed Silver



Golden Oak



Heather Willow



Onyx



Alpine White



Desert Bronze



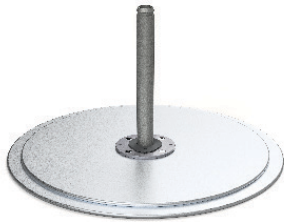
Carbon

AURORA CANTILEVER SPECIFIC MOUNTING OPTIONS

★ **FINISH DISCLAIMER:** See current MSRP for Up-charge (+MSRP)

Bases have a +/- 10 lbs. (4.5 kg.) tolerance based on a variety of variables. Dimensions +/- 1-2".

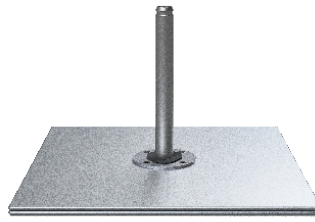
We recommend to consult a licensed professional before installing all in-ground and direct surface installations.



40G+36G Galvanized Steel Stack ●

- Weight: **335 lbs./152 kg.**
- Dimensions: **40"**/101cm • **1"**/2.5cm
- Free-Standing Use
- Add **36G-TC**

Required minimum galvanized stack for the Aurora Cantilever.



36G-SQx2 Galvanized Plate Stack ●

- Weight: **400 lbs./181 kg.**
- Dimensions: **36"**/91cm • **1"**/2.5cm
- Free-Standing Use
- Add **36G-SQ-TC**

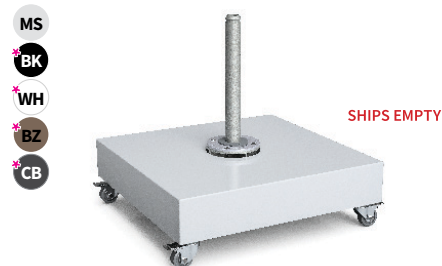
Required minimum galvanized stack for the Aurora Cantilever.



36G-SQx2+W Galvanized Steel Stack

- Weight: **414 lbs./188 kg.**
- Dimensions: **36"**/91cm • **6"**/15.2cm
- Free-Standing Use **/+W**
- Add **36G-SQ-TC**

Required minimum galvanized stack for the Aurora Cantilever.

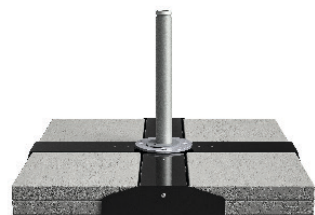


480 Base (includes wheels and feet)

- Weight: **80 lbs./36 kg.**
- Dimensions: **34"**/86cm • **6.5"**/16.5cm
- Wheels increase height **5"**/12.7cm
- Powder Coated Aluminum Cover
- Free-Standing Use **RESIDENTIAL ONLY**

PAVERS NOT INCLUDED

(12) 16" x 16" Pavers (35 lbs. Min ea.)
+/- 20 lbs. minimum **480 lbs./217 kg.**

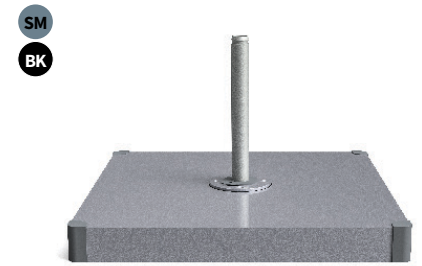


XB Modular Cross Base w/o Cover

- Weight: **36 lbs./16 kg.**
- Dimensions: **39"**/99cm • **5"**/12.7cm
- Free-Standing Use **RESIDENTIAL ONLY**

Required: (8) 16" x 16" Pavers to properly weight the base to **335 lbs./152 kg.**

PAVERS NOT INCLUDED

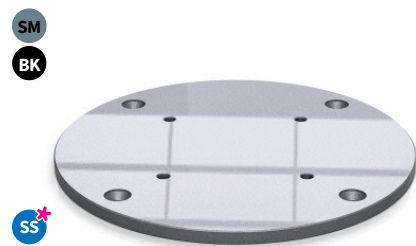


XB+C Modular Cross Base w/ Cover

- Weight: **38 lbs./17 kg.**
- Dimensions: **40"**/101cm • **.5"**/12.7mm
- Free-Standing Use **RESIDENTIAL ONLY**

Required: (8) 16" x 16" Pavers to properly weight the base to **335 lbs./152 kg.**

PAVERS NOT INCLUDED



DP Direct Surface Mounting Plate

- Weight: **12 lbs./5 kg.**
- Dimensions: **12.5"**/32cm • **.5"**/12.7mm
- Surface Installation
- **SS** Upgrade Available **DP-SS** ★

In-ground mounting into soft soil or concrete.

Installation hardware not included.



IG In-Ground Mount ●

- Weight: **18 lbs./8.5 kg.**
- Dimensions: **8.5"**/21cm • **14"**/35cm
- In-Ground Installation

In-ground mounting into soft soil or concrete.

Installation hardware not included.



GALVANIZED PLATE Top Cover

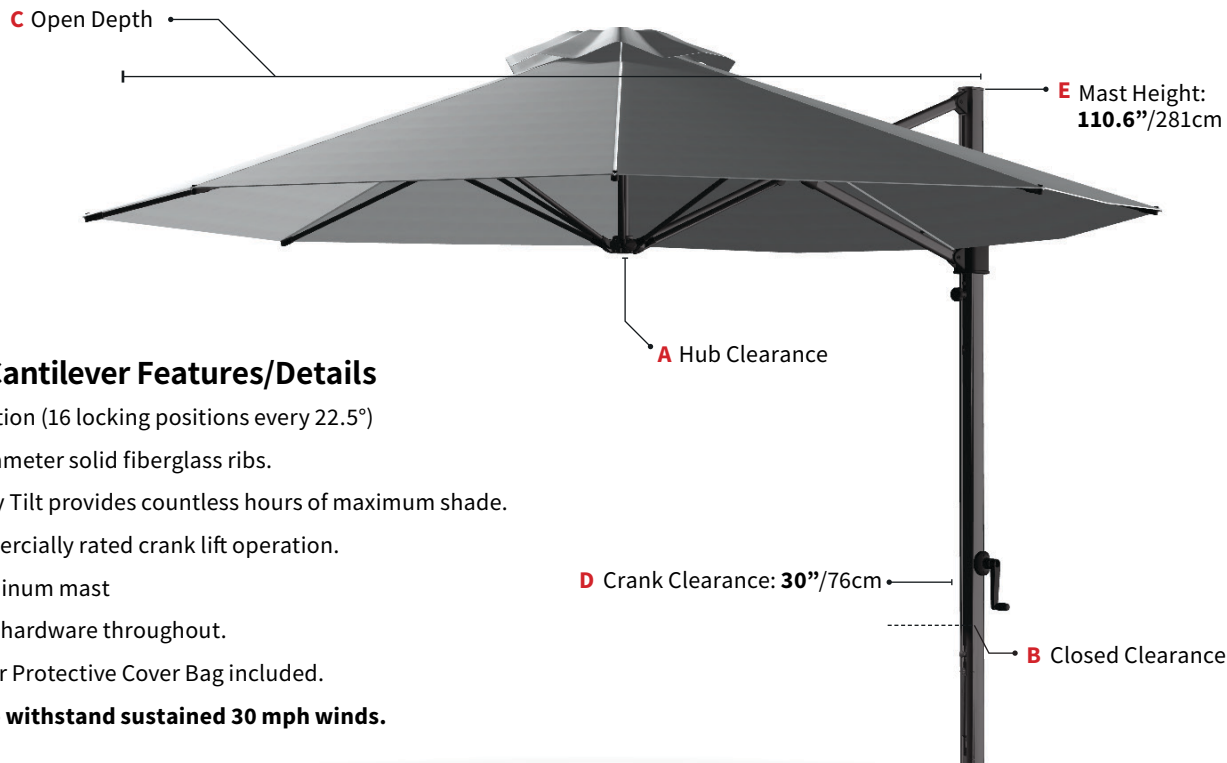
Aluminum top covers for Galvanized Plates.

If being used on a plate stack, the cover will only be used on the top plate.

See pg. 48 for available sizes.

Mast Diameter: **2.75"x4"/7x10cm**

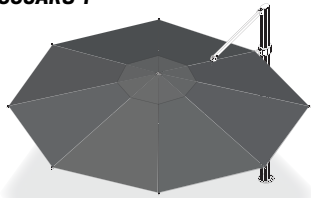
Advertised dimensions have a +/-6" tolerance based on the pitch angle of the umbrella rib, pin placement, and fabric tautness. Base selection will also effect overall heights and clearances.



AURORA-F Cantilever Features/Details

- 360° Mast rotation (16 locking positions every 22.5°)
- .75" (19mm) Diameter solid fiberglass ribs.
- Canopy Infinity Tilt provides countless hours of maximum shade.
- Smooth commercially rated crank lift operation.
- Extruded aluminum mast
- Stainless steel hardware throughout.
- Black Polyester Protective Cover Bag included.
- **Engineered to withstand sustained 30 mph winds.**

880ARU-F



13ft./4m Octagon

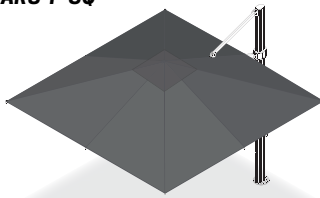
A 81.3"/206.5cm

B 32"/81cm

C 159"/403cm

Weight: **132 lbs./60 kg.**

883ARU-F-SQ



10ft. x 10ft. /3m Square

A 85"/216cm

B 26.7"/67.8cm

C 132"/336cm

Weight: **130 lbs. /58 kg.**

Frame Finishes

★ **FINISH DISCLAIMER:** See current MSRP for Up-charge (+MSRP)



Brushed Silver



Golden Oak



Heather Willow



Onyx



Alpine White



Desert Bronze



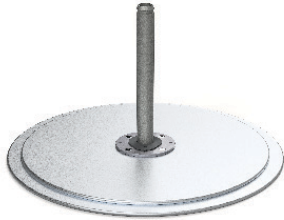
Carbon

AURORA-F CANTILEVER SPECIFIC MOUNTING OPTIONS

★ **FINISH DISCLAIMER:** See current MSRP for Up-charge (+MSRP)

Bases have a +/- 10 lbs. (4.5 kg.) tolerance based on a variety of variables. Dimensions +/- 1-2".

We recommend to consult a licensed professional before installing all in-ground and direct surface installations.



40G+36G Galvanized Steel Stack ●

- Weight: **335 lbs./152 kg.**
- Dimensions: **40"**/101cm • **1"**/2.5cm
- Free-Standing Use
- Add **36G-TC**

Required minimum galvanized stack for the Aurora Cantilever.



36G-SQx2 Galvanized Plate Stack ●

- Weight: **400 lbs./181 kg.**
- Dimensions: **36"**/91cm • **1"**/2.5cm
- Free-Standing Use
- Add **36G-SQ-TC**

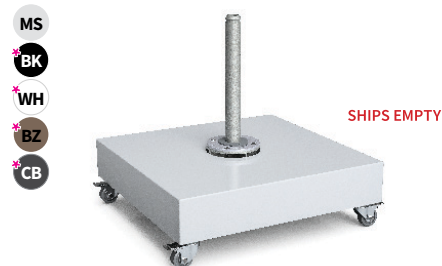
Required minimum galvanized stack for the Aurora Cantilever.



36G-SQx2+W Galvanized Steel Stack ●

- Weight: **414 lbs./188 kg.**
- Dimensions: **36"**/91cm • **6"**/15.2cm
- Free-Standing Use **/+W**
- Add **36G-SQ-TC**

Required minimum galvanized stack for the Aurora Cantilever.

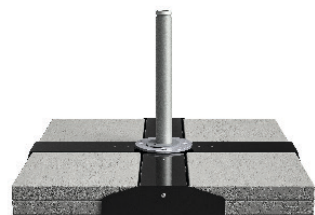


480 Base (includes wheels and feet)

- Weight: **80 lbs./36 kg.**
- Dimensions: **34"**/86cm • **6.5"**/16.5cm
- Wheels increase height **5"**/12.7cm
- Powder Coated Aluminum Cover
- Free-Standing Use **RESIDENTIAL ONLY**

PAVERS NOT INCLUDED

(12) 16" x 16" Pavers (35 lbs. Min ea.)
+/- 20 lbs. minimum **480 lbs./217 kg.**

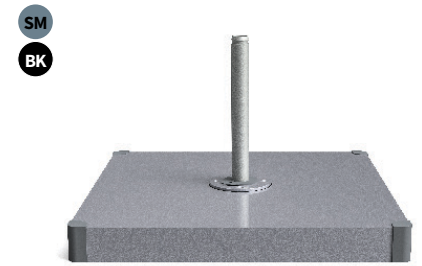


XB Modular Cross Base w/o Cover

- Weight: **36 lbs./16 kg.**
- Dimensions: **39"**/99cm • **5"**/12.7cm
- Free-Standing Use **RESIDENTIAL ONLY**

Required: (8) 16" x 16" Pavers to properly weight the base to **335 lbs./152 kg.**

PAVERS NOT INCLUDED

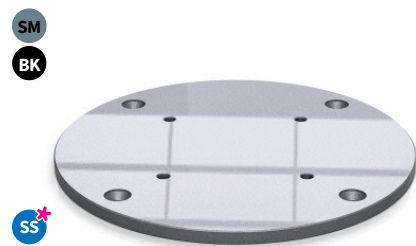


XB+C Modular Cross Base w/ Cover

- Weight: **38 lbs./17 kg.**
- Dimensions: **40"**/101cm • **.5"**/12.7mm
- Free-Standing Use **RESIDENTIAL ONLY**

Required: (8) 16" x 16" Pavers to properly weight the base to **335 lbs./152 kg.**

PAVERS NOT INCLUDED



DP Direct Surface Mounting Plate

- Weight: **12 lbs./5 kg.**
- Dimensions: **12.5"**/32cm • **.5"**/12.7mm
- Free-Standing Surface Installation
- **SS** Upgrade Available **DP-SS** ★

In-ground mounting into soft soil or concrete.

Installation hardware not included.

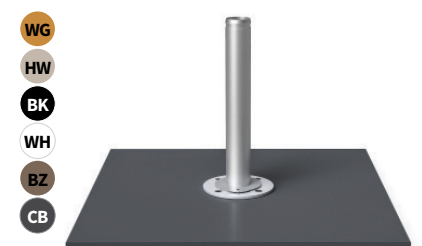


IG In-Ground Mount ●

- Weight: **18 lbs./8.5 kg.**
- Dimensions: **8.5"**/21cm • **14"**/35cm
- In-Ground Installation

In-ground mounting into soft soil or concrete.

Installation hardware not included.



GALVANIZED PLATE Top Cover

Aluminum top covers for Galvanized Plates.

If being used on a plate stack, the cover will only be used on the top plate.

See pg. 48 for available sizes.



NOVA GIANT TELESCOPING MARKET UMBRELLA

13ft. x 13ft. Square Giant Telescoping Market Umbrella / **MS** - Brushed Silver Anodized Finish
Recasens® R-176 Logo Red (**GRADE A**) 9oz. Marine Grade Acrylic Fabric
Mounting: **NGU-DP** - Nova Specific Surface Deck Plate

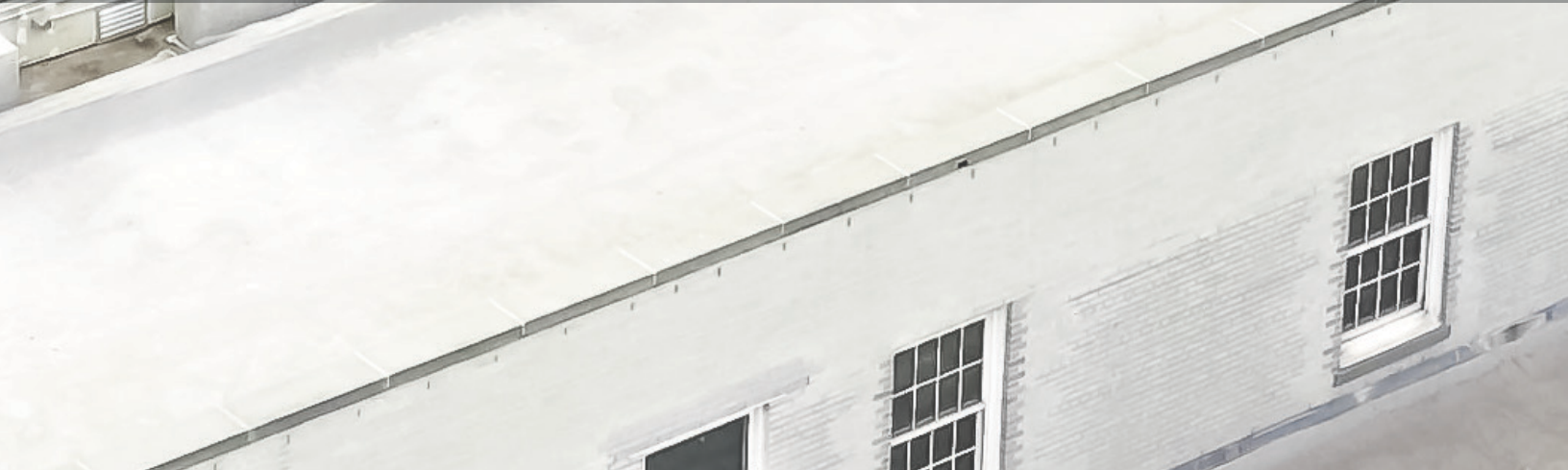


8110NGU-SQ-MS-R176



NOVA

GIANT *ALUMINUM* TELESCOPING UMBRELLA

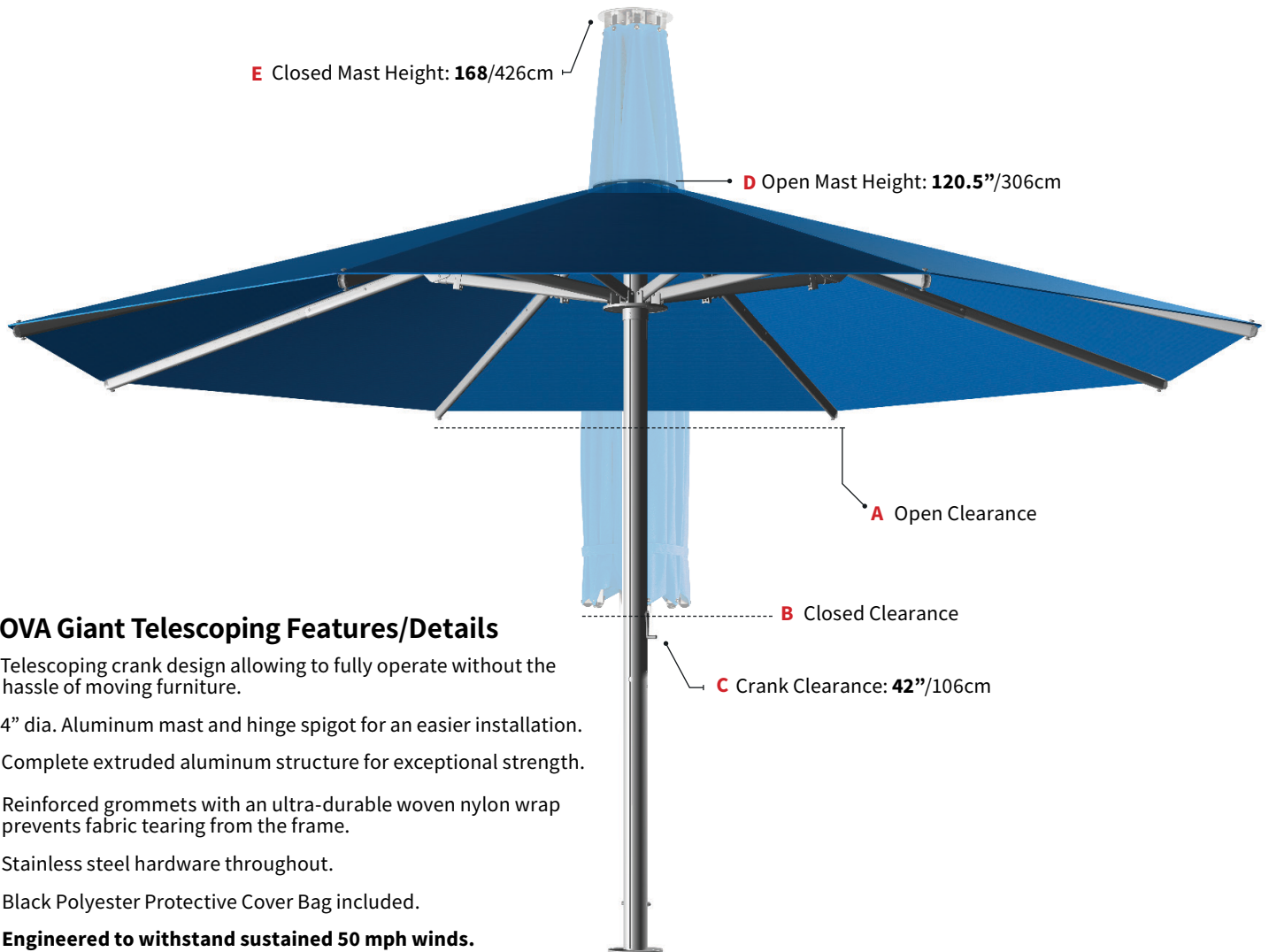


The Nova offers maximum shade and weather protection for commercial and residential environments. Its 9 oz. marine-grade acrylic canopy is supported by reinforced extruded aluminum ribs that connect to a 4-inch mast. The commercial-grade telescoping mechanism allows for effortless opening and closing of the umbrellas without having to move any furniture underneath.

The Nova is one of the only large shade structures in the industry with semi-permanent and non-permanent mounts available. This umbrella not only looks spectacular, but is a practical shade solution in a number of applications.

Mast Diameter: 4"/10cm

Advertised dimensions have a +/-6" tolerance based on the pitch angle of the umbrella rib, pin placement, and fabric tautness. Base selection will also effect overall heights and clearances.



NOVA Giant Telescoping Features/Details

- Telescoping crank design allowing to fully operate without the hassle of moving furniture.
- 4" dia. Aluminum mast and hinge spigot for an easier installation.
- Complete extruded aluminum structure for exceptional strength.
- Reinforced grommets with an ultra-durable woven nylon wrap prevents fabric tearing from the frame.
- Stainless steel hardware throughout.
- Black Polyester Protective Cover Bag included.
- **Engineered to withstand sustained 50 mph winds.**

Frame Finishes

★ **FINISH DISCLAIMER:** See current MSRP for Up-charge (+MSRP)



Brushed Silver



Golden Oak



Heather Willow



Onyx



Alpine White



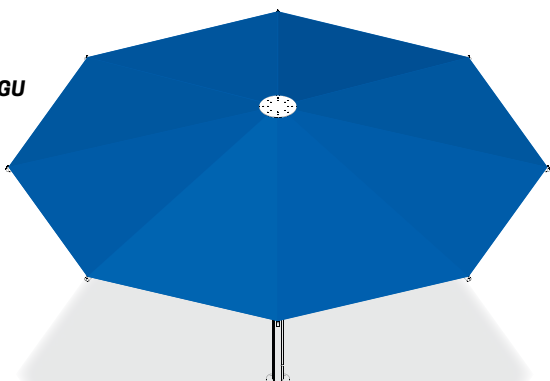
Desert Bronze



Carbon

Please see our “Umbrella Base Guide” on pg. 44 for recommended base options, based on the umbrella size and desired application (table use or free-standing).

896NGU



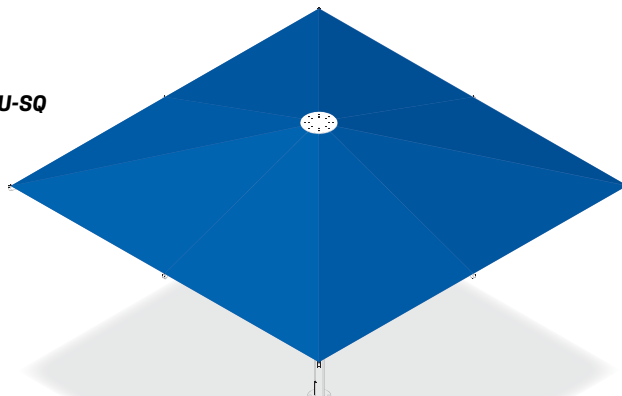
16ft./5m Octagon

A 90.8”/230cm

B 52”/132cm

Weight: **205 lbs./93 kg.**

8110NGU-SQ



13ft. X 13ft./4m Square

A 92”/233cm

B 66”/167cm

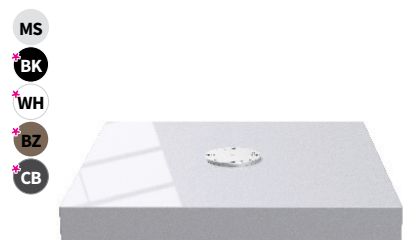
Weight: **195 lbs./88 kg.**

NOVA GIANT SPECIFIC MOUNTING OPTIONS

★ **FINISH DISCLAIMER:** See current MSRP for Up-charge (+MSRP)

Bases have a +/- 10 lbs. (4.5 kg.) tolerance based on a variety of variables. Dimensions +/- 1-2".

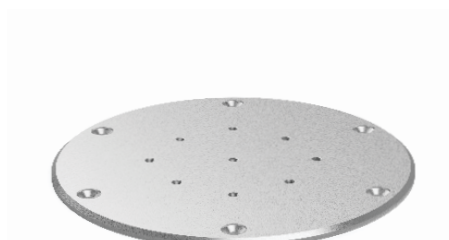
We recommend to consult a licensed professional before installing all in-ground and direct surface installations.



NGU550 Galvanized Steel Max Base

- Weight: **550 lbs./249 kg.**
- Dimensions: **45”/114cm • 5”/12.7cm**
- Powder Coated Aluminum Cover
- Free-Standing Use

Commercial use and large areas.



NGU-DP Surface Mounting Plate ●

- Weight: **20 lbs./9 kg.**
- Dimensions: **16”/40cm • .5”/12.7mm**
- Surface Installation

In-ground mounting into soft soil or concrete.

Installation hardware not included.



IG In-Ground Mount ●

- Weight: **18 lbs./8.5 kg.**
- Dimensions: **8.5”/21cm • 14”/35cm**
- In-Ground Installation

In-ground mounting into soft soil or concrete.

Installation hardware not included.





MARELLA

LUXURY POOL/BEACH RESORT CABANA

MARELLA CABANA

10ft. x 10ft. Square Luxury Cabana • 2" Diameter Supports / 4 Full-Corner Accent Curtains

SR - Platinum Anodized Finish

VF-SS - Stainless Steel Vertex Finial

Recasens® R-099 White (**GRADE A**) / R-229 Sapphire (**GRADE A**) Marine Grade Acrylic Fabric

Mounting: 8ST-C+DP - 8" Marella Stainless Steel Stem / Stem Surface Mounting Plate



883MLA-SQ-SR-R229/
SV-R099/FC-R099/TB-R229

Upright Pole(s) Diameter: 2"/5cm

Advertised dimensions have a +/-6" tolerance based on the pitch angle of the umbrella rib, pin placement, and fabric tautness. Base selection will also effect overall heights and clearances.

Marella Features/Details

- Complete Marine Grade Extruded Aluminum Frame.
- Type II, Class I performance anodizing marine standard.
- 316L Stainless Steel Hardware / Couplings.
- Easy drop in canopy attachment with barrel bolt connections.
- Engineered for a simplified assembly.
- 2" diameter (.125" thick) corner mounting post.
- 1.5" diameter (.125" thick) 45° corner structure supports.
- 2mm thick canopy ribs - added strength against the wind.
- **INCLUDED (as shown):** 8ST-C Stem, Full Accent Curtains (x4).



Add-On Options

Below are three itemized add-ons for the Marella Cabana. They can be configured in any way and in conjunction with each other including the full-turn accent curtains.

Full Privacy Tension Wall (X1)



MLA-FW

Privacy walls are paired with the required lower tension rail.

Each wall includes (1) lower support rail. Will require a pair of Half Curtains for each wall. **(Shown full enclosure: 3 walls)**

Entrance Half Curtains (X2)



MLA-HC

Zipper to a full wall or split wall to cap ends and accent the opening to the Marella.

Full Curtain Split Wall (X1)



MLA-SW

Privacy wall with a 90% split. Can attach to another split wall for a more private enclosure.

Frame Finishes/Finial

Default Finial: Stainless Steel **Vertex**.

★ **FINISH DISCLAIMER:** See current MSRP for Up-charge (+MSRP)



Platinum



Brushed Silver



Golden Oak



Heather Willow



Onyx



Alpine White



Desert Bronze



Carbon

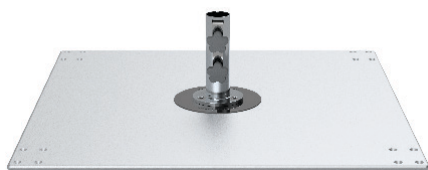
MARELLA SPECIFIC MOUNTING OPTIONS

Finish Disclaimer

✦ See current MSRP for Upcharge (+MSRP)

Bases have a +/- 10 lbs. (4.5 kg.) tolerance based on a variety of variables. Dimensions +/- 1-2".

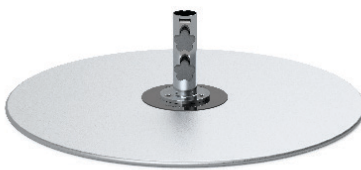
We recommend to consult a licensed professional before installing all in-ground and direct surface installations.



36G-SQ-MLA Galvanized Plate ●

- Weight: **200 lbs.**/90 kg.
- Dimensions: **36"**/91cm • **.5"**/12.7mm
- Free-Standing Use
- Add **36G-SQ-TC**
- **Wheels are not recommended**

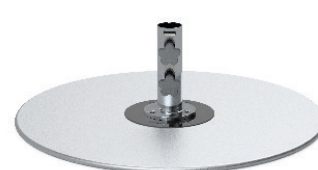
Can be stacked up to three (3) plates. Must be paired with a stem.



36G-MLA Galvanized Plate ●

- Weight: **150 lbs.**/68 kg.
- Dimensions: **36"**/91cm • **.5"**/12.7mm
- Free-Standing Use
- Add **36G-TC**

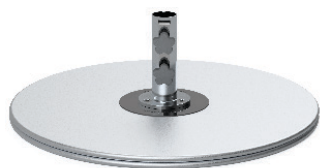
Can be stacked up to three (3) plates. Must be paired with a stem.



30G-MLA Galvanized Plate ●

- Weight: **100 lbs.**/45 kg.
- Dimensions: **30"**/76cm • **.5"**/12.7mm
- Free-Standing Use
- Add **30G-TC**

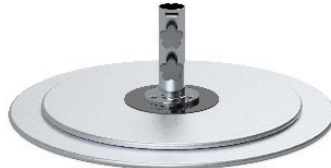
Can be stacked up to three (3) plates. Must be paired with a stem.



30Gx2-MLA Galvanized Plate ●

- Weight: **200 lbs.**/90 kg.
- Dimensions: **30"**/76cm • **.5"**/12.7mm
- Free-Standing Use
- Add **30G-TC**

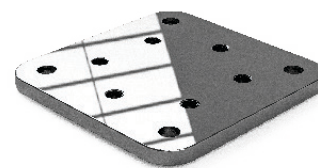
A third plate equal to greater than the size and or weight of the bottom plate can be added.



30G+24G-MLA Galvanized Plate ●

- Weight: **170 lbs.**/77 kg.
- Dimensions: **30"**/76cm • **.5"**/12.7mm
- Free-Standing Use
- Add **24G-TC**

A third plate equal to greater than the size and or weight of the bottom plate can be added.



DP-ST Surface Mount Stem Plate ●

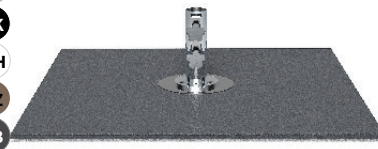
- Weight: **5 lbs.**/2.25 kg.
- Dimensions: **5"**/12.7cm • **.5"**/12.7mm
- Stem Mounting Plate
- Free-Standing Surface

Stainless Steel surface mounting plate can only be used with a stainless stem (**8ST, 18ST/2, 8ST2-C**)



8ST-C Marella Stem (included) ●

- **8"**/20cm • **2"**/5cm
- Even Pressure Clamping Plate
- Security Hitch Pin



GALVANIZED PLATE Top Cover

Aluminum top covers for Galvanized Plates.

If being used on a plate stack, the cover will only be used on the top plate.

See pg. 48 for available sizes.



G-SERIES CAM

***GIANT GREENWICH* MARKET UMBRELLAS**

The G-Series is the flagship center post umbrella for all luxury resorts, hotels, and high-end outdoor living spaces. Built with the same commercial-quality materials as the Greenwich and Monterey, the G-Series offers free-standing maximum shade options on a larger 2" center post with three canopy size options. We offer permanent, semi-permanent, and free-standing base options to accommodate any outdoor space.



G-SERIES FM

GIANT *MONTEREY* MARKET UMBRELLAS

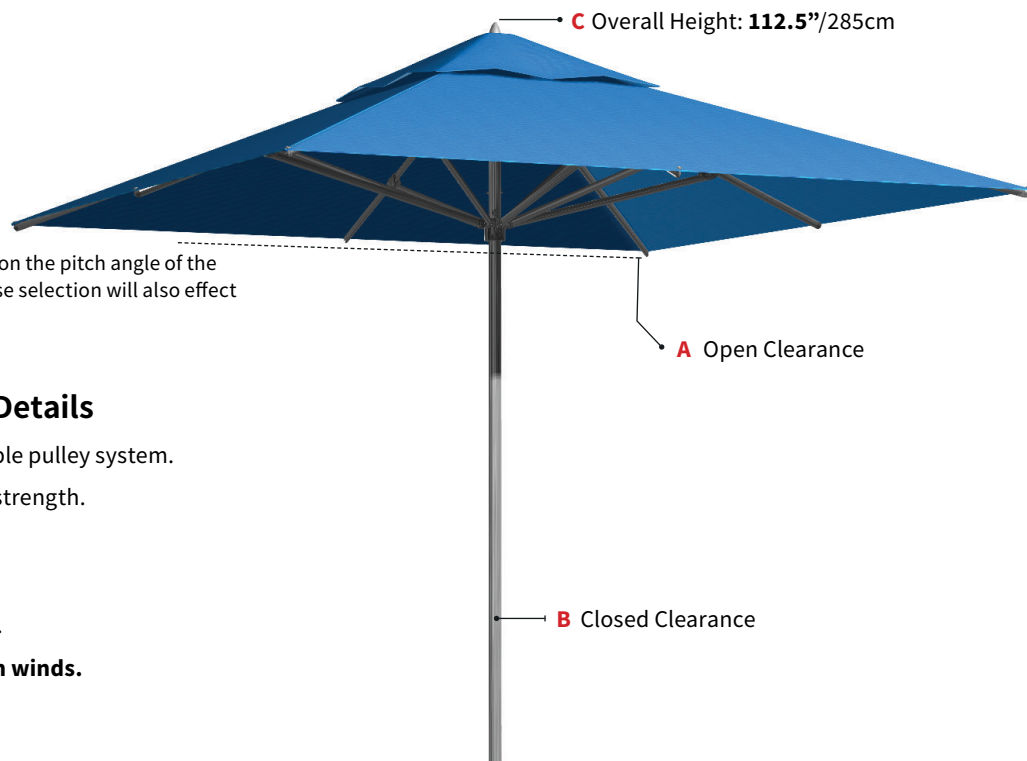
MONTEREY GIANT FIBERGLASS MARKET

10ft. x 10ft. Square Giant Fiberglass Umbrella • 2" Diameter Pole-Pulley Lift / **SR** - Platinum Finish
VF - Chrome Plated Vertex Finial
Recasens® R-099 White (**GRADE A**) 9oz. Marine Grade Acrylic Fabric
Mounting: **36G+18ST-2** - 150lbs. 36" Round Galvanized Steel Plate + 18" Stainless Steel Stem



883FM-SQ-SR-R099

Mast Diameter: 2"/5cm

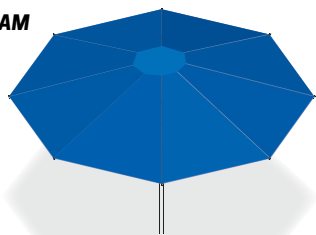


Advertised dimensions have a +/-6" tolerance based on the pitch angle of the umbrella rib, pin placement, and fabric tautness. Base selection will also effect overall heights and clearances.

G-SERIES GREENWICH Features/Details

- Smooth and effortless kernmantle rope double pulley system.
- Ergonomically designed ribs provide added strength.
- 2" dia. x 3.2mm thick aluminum center pole.
- Stainless steel hardware throughout.
- Stainless steel canopy grommet attachment.
- **Engineered to withstand sustained 35 mph winds.**

880CAM



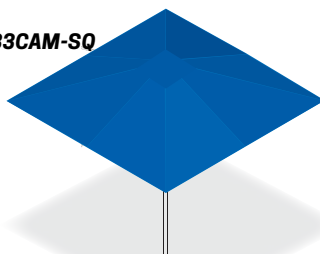
13ft./4m Octagon

A 87"/221cm

B 30.5"/77cm

Weight: **47 lbs./21 kg.**

883CAM-SQ



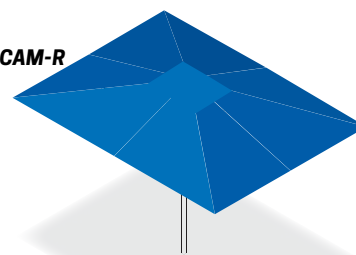
10ft. x 10ft. /3m Square

A 85.5"/216cm

B 28"/70cm

Weight: **43 lbs. /19.5 kg.**

882CAM-R



8.5ft. x 11ft. /2.5m x 3.5m Rectangle

A 88"/223cm

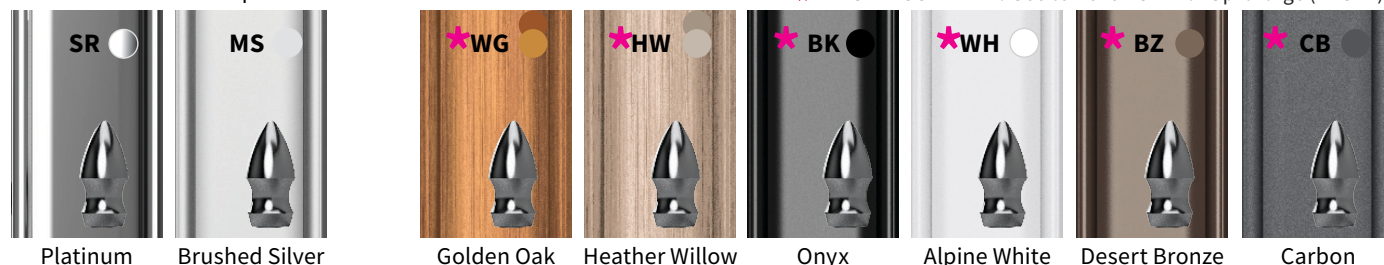
B 27"/68cm

Weight: **42 lbs. /19 kg.**

Frame Finishes/Finials

Default Finial: Chrome plated **Vertex**.

★ **FINISH DISCLAIMER:** See current MSRP for Up-charge (+MSRP)



Optional Finial

Chrome Plated **Classic ball**.



Stainless Steel upgrade (**Vertex & Classic Ball**).

G-SERIES SPECIFIC MOUNTING OPTIONS

★ **FINISH DISCLAIMER:** See current MSRP for Up-charge (+MSRP)

Bases have a +/- 10 lbs. (4.5 kg.) tolerance based on a variety of variables. Dimensions +/- 1-2".

We recommend to consult a licensed professional before installing all in-ground and direct surface installations.



40G+18ST2 Galvanized Plate ●

- Weight: **185 lbs./**84 kg.
- Dimensions: **40"**/101cm • **1"**/2.5cm
- Stem: (**18ST2**) **18"**/45cm • **2"**/5cm
- Free-Standing Use
- Add **40G-TC**

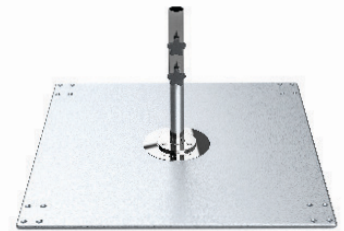
Can stack up-to three (3) plates for additional weight.



36G+18ST2 Galvanized Plate ●

- Weight: **150 lbs./**68 kg.
- Dimensions: **36"**/91cm • **1"**/2.5cm
- Stem: (**18ST2**) **18"**/45cm • **2"**/5cm
- Free-Standing Use
- Add **36G-TC**

Can stack up-to three (3) plates for additional weight.



36G-SQ+18ST2 Galvanized Plate ●

- Weight: **200 lbs./**91 kg.
- Dimensions: **36"**/91cm • **1"**/2.5cm
- Stem: (**18ST2**) **18"**/45cm • **2"**/5cm
- Free-Standing Use
- Add **36G-SQ-TC**

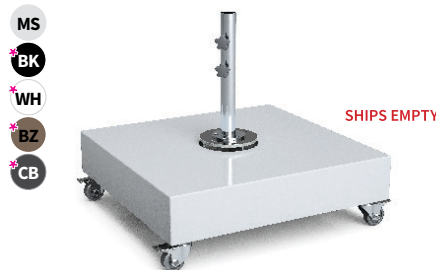
Can stack up-to three (3) plates for additional weight.



36G-SQ+W+18ST2 Galvanized Plate

- Weight: **214 lbs./**97 kg.
- Dimensions: **36"**/91cm • **6"**/15.2cm
- Stem: (**18ST2**) **18"**/45cm • **2"**/5cm
- Free-Standing Use **+W** (wheels)
- Add **36G-SQ-TC**

Can stack up-to three (3) plates for additional weight.

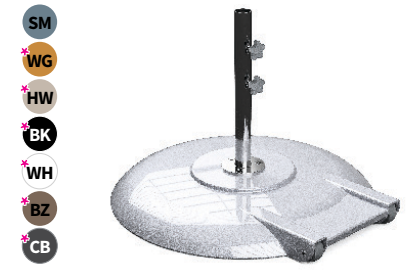


480+18ST2 (includes wheels and feet)

- Weight: **80 lbs./**36 kg.
- Dimensions: **34"**/86cm • **6.5"**/16.5cm
- Stem: (**18ST2**) **18"**/45cm • **2"**/5cm
- Wheels increase height **5"**/12.7cm
- Free-Standing Use

PAVERS NOT INCLUDED

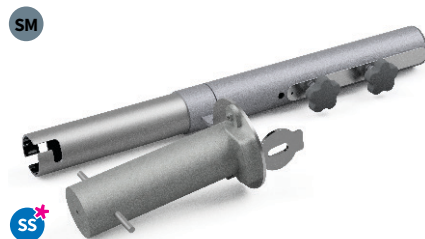
(12) 16" x 16" Pavers (35 lbs. Min ea.)
+/- 20 lbs. minimum **480 lbs./**217 kg.



150A+18ST2 Premium Aluminum

- Weight: **150 lbs./**68kg.
- Dimensions: **30"**/76cm • **3.5"**/9cm
- Stem: (**18ST2**) **18"**/45cm • **2"**/5cm
- Free-Standing Use

Aluminum, concrete-filled shell with rear hooded wheels.



BZ2-SM In-Ground Mounting Stem

- Weight: **11 lbs./**5 kg.
- Stem: **16"**/40cm • **2"**/5cm
- In-Ground: **8.5"**/21cm
- **SS** Upgrade Available **BZ2-SS** ★

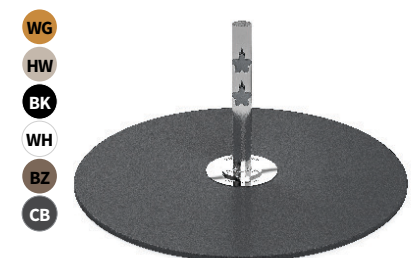
In-ground sleeve installation with removable stem.



38SAP-2 Soft Surface Anchor

- Weight: **4 lbs./**1.8 kg.
- Dimensions: **38"**/96cm
- **2"**/5cm Diameter Umbrella
- Free-Standing In-Ground Use

2" Aluminum sand anchor sleeve.
Customer must drill a hole to accommodate hitch pin.



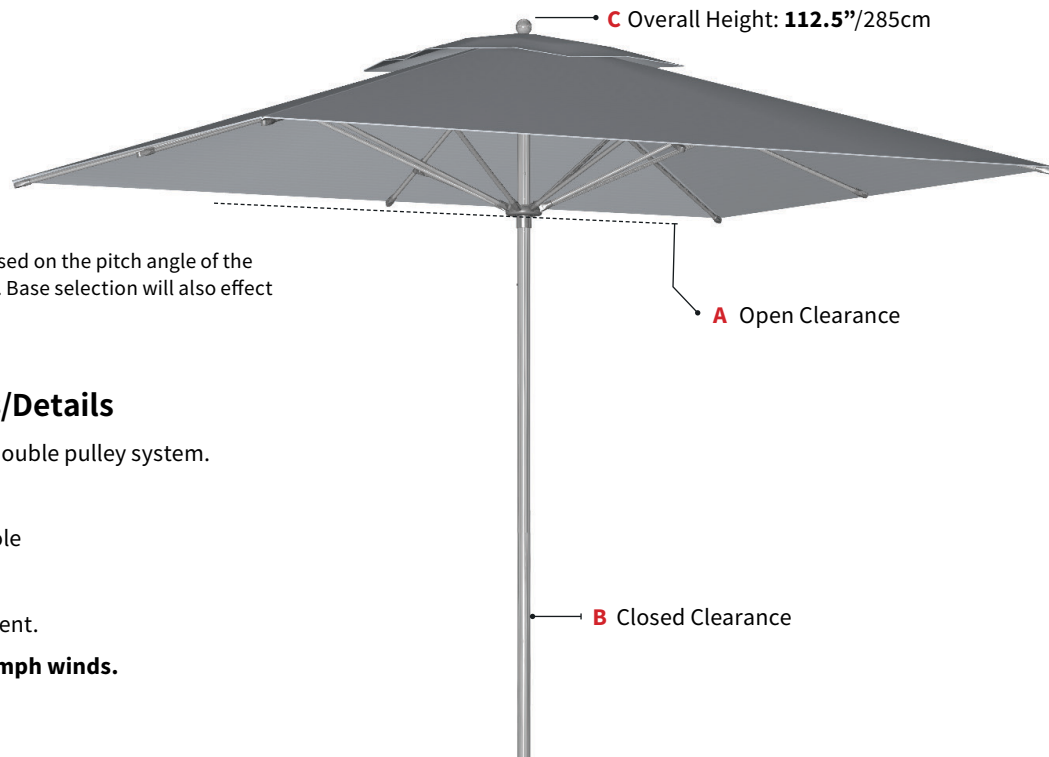
GALVANIZED PLATE Top Cover

Aluminum top covers for Galvanized Plates.

If being used on a plate stack, the cover will only be used on the top plate.

See pg. 48 for available sizes.

Mast Diameter: 2"/5cm

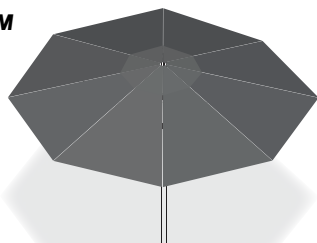


Advertised dimensions have a +/-6" tolerance based on the pitch angle of the umbrella rib, pin placement, and fabric tautness. Base selection will also effect overall heights and clearances.

G-SERIES MONTEREY Features/Details

- Smooth and effortless kernmantle rope double pulley system.
- .75" (19mm) Diameter fiberglass ribs.
- 2" dia. x 3.2mm thick aluminum center pole
- Stainless steel hardware throughout.
- Stainless steel canopy grommet attachment.
- **Engineered to withstand sustained 35 mph winds.**

880FM



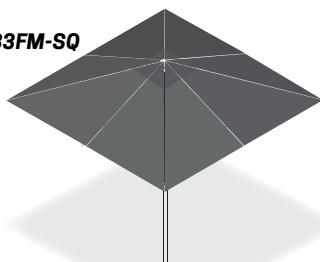
13ft./4m Octagon

A 87"/221cm

B 30.5"/77cm

Weight: 47 lbs./21 kg.

883FM-SQ



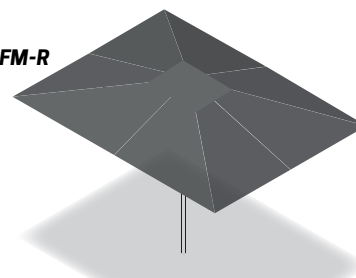
10ft. x 10ft. /3m Square

A 85.5"/216cm

B 28"/70cm

Weight: 43 lbs. /19.5 kg.

882FM-R



8.5ft. x 11ft. /2.5m x 3.5m Rectangle

A 88"/223cm

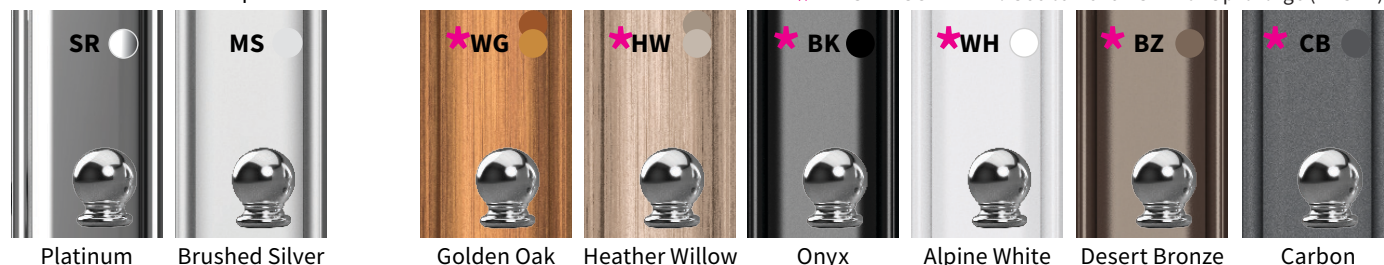
B 27"/68cm

Weight: 42 lbs. /19 kg.

Frame Finishes/Finials

Default Finial: Chrome plated **Classic Ball**.

★ **FINISH DISCLAIMER:** See current MSRP for Up-charge (+MSRP)



Optional Finial

Chrome Plated **Vertex**.



Stainless Steel upgrade (**Vertex & Classic Ball**).

G-SERIES SPECIFIC MOUNTING OPTIONS

★ **FINISH DISCLAIMER:** See current MSRP for Up-charge (+MSRP)

Bases have a +/- 10 lbs. (4.5 kg.) tolerance based on a variety of variables. Dimensions +/- 1-2".

We recommend to consult a licensed professional before installing all in-ground and direct surface installations.



40G+18ST2 Galvanized Plate ●

- Weight: **185 lbs./**84 kg.
- Dimensions: **40"**/101cm • **1"**/2.5cm
- Stem: (**18ST2**) **18"**/45cm • **2"**/5cm
- Free-Standing Use
- Add **40G-TC**

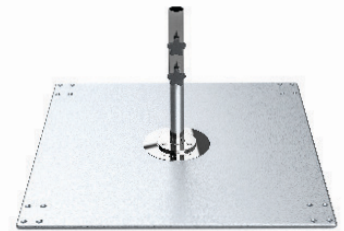
Can stack up-to three (3) plates for additional weight.



36G+18ST2 Galvanized Plate ●

- Weight: **150 lbs./**68 kg.
- Dimensions: **36"**/91cm • **1"**/2.5cm
- Stem: (**18ST2**) **18"**/45cm • **2"**/5cm
- Free-Standing Use
- Add **36G-TC**

Can stack up-to three (3) plates for additional weight.



36G-SQ+18ST2 Galvanized Plate

- Weight: **200 lbs./**91 kg.
- Dimensions: **36"**/91cm • **1"**/2.5cm
- Stem: (**18ST2**) **18"**/45cm • **2"**/5cm
- Free-Standing Use
- Add **36G-SQ-TC**

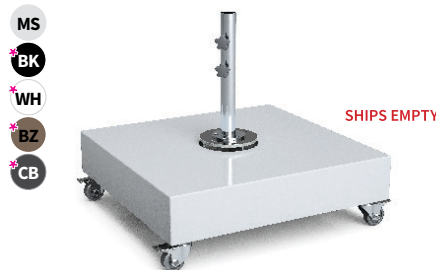
Can stack up-to three (3) plates for additional weight.



36G-SQ+W+18ST2 Galvanized Plate

- Weight: **214 lbs./**97 kg.
- Dimensions: **36"**/91cm • **6"**/15.2cm
- Stem: (**18ST2**) **18"**/45cm • **2"**/5cm
- Free-Standing Use **+W** (wheels)
- Add **36G-SQ-TC**

Can stack up-to three (3) plates for additional weight.

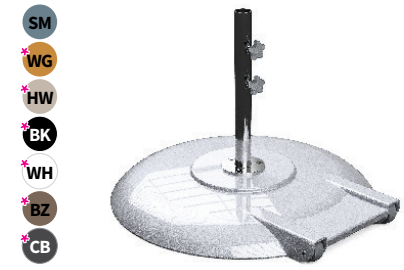


480+18ST2 (includes wheels and feet)

- Weight: **80 lbs./**36 kg.
- Dimensions: **34"**/86cm • **6.5"**/16.5cm
- Stem: (**18ST2**) **18"**/45cm • **2"**/5cm
- Wheels increase height **5"**/12.7cm
- Free-Standing Use

PAVERS NOT INCLUDED

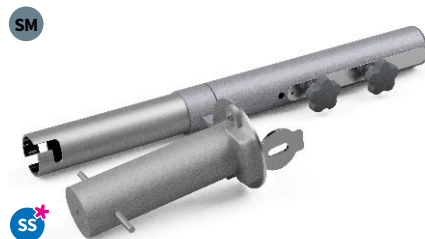
(12) 16" x 16" Pavers (35 lbs. Min ea.)
+/- 20 lbs. minimum **480 lbs./**217 kg.



150A+18ST2 Premium Aluminum

- Weight: **150 lbs./**68kg.
- Dimensions: **30"**/76cm • **3.5"**/9cm
- Stem: (**18ST2**) **18"**/45cm • **2"**/5cm
- Free-Standing Use

Aluminum, concrete-filled shell with rear hooded wheels.



BZ2-SM In-Ground Mounting Stem

- Weight: **11 lbs./**5 kg.
- Stem: **16"**/40cm • **2"**/5cm
- In-Ground: **8.5"**/21cm
- **SS** Upgrade Available **BZ2-SS** ★

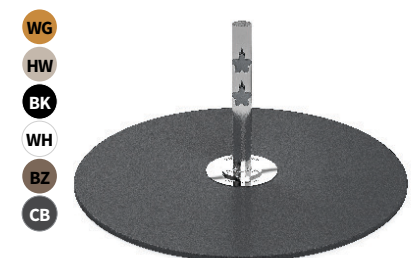
In-ground sleeve installation with removable stem.



38SAP-2 Soft Surface Anchor

- Weight: **4 lbs./**1.8 kg.
- Dimensions: **38"**/96cm
- **2"**/5cm Diameter Umbrella
- Free-Standing In-Ground Use

2" Aluminum sand anchor sleeve.
Customer must drill a hole to accommodate hitch pin.



GALVANIZED PLATE Top Cover

Aluminum top covers for Galvanized Plates.

If being used on a plate stack, the cover will only be used on the top plate.

See pg. 48 for available sizes.



GREENWICH DESIGNER ALUMINUM MARKET

6.5ft. x 6.5ft. Square Aluminum Market Umbrella • 1.5" Diameter Pole-Pulley Lift / **SR** - Platinum Finish
VF - Chrome Plated Vertex Finial
Recasens® R-099 White (**GRADE A**) 9oz. Marine Grade Acrylic Fabric



454CAM-SQ-SR-R099



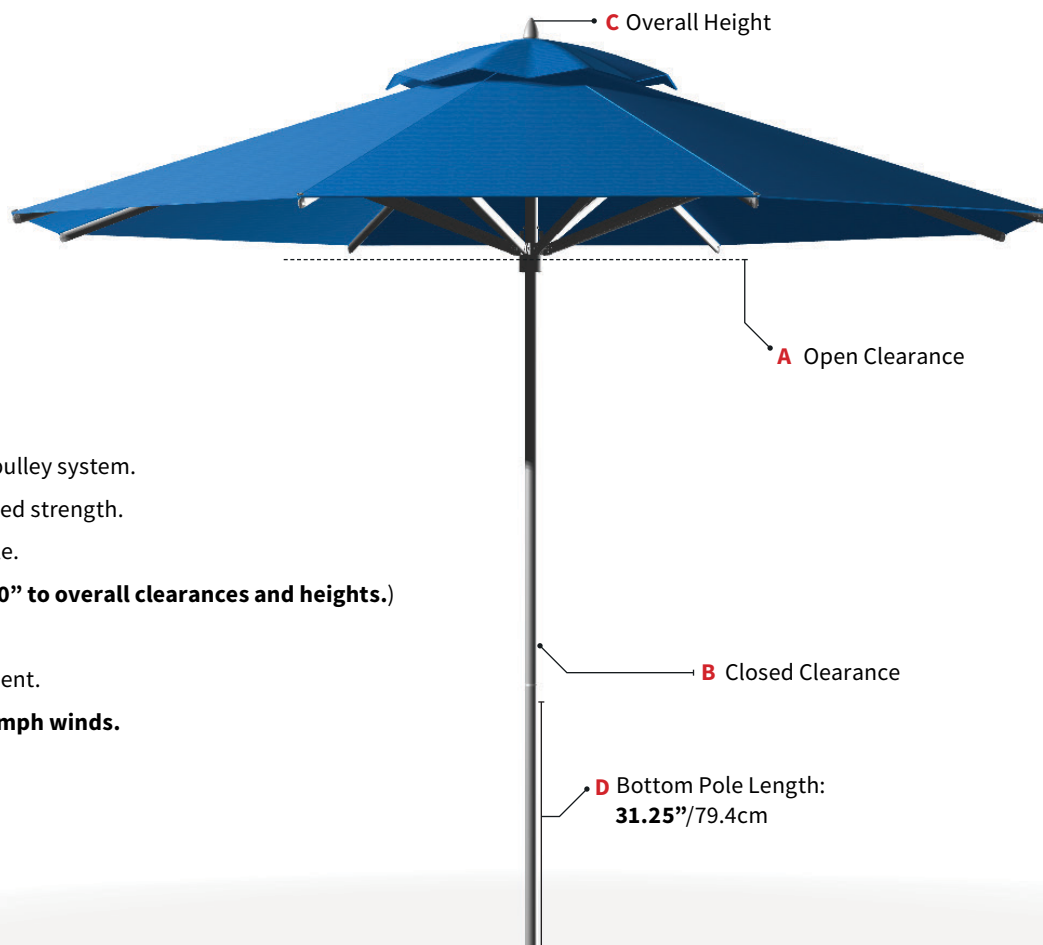
GREENWICH

DESIGNER **ALUMINUM** MARKET UMBRELLAS

This designer umbrella available in five sizes, combines luxury with style to create a sophisticated look in any outdoor environment. The easy-glide pulley system allows for effortless opening and closing.

Choose from 8 beautiful finishes to add the perfect touch of the resort luxury to your cherished outdoor space.

Mast Diameter: **1.5"**/3.8cm



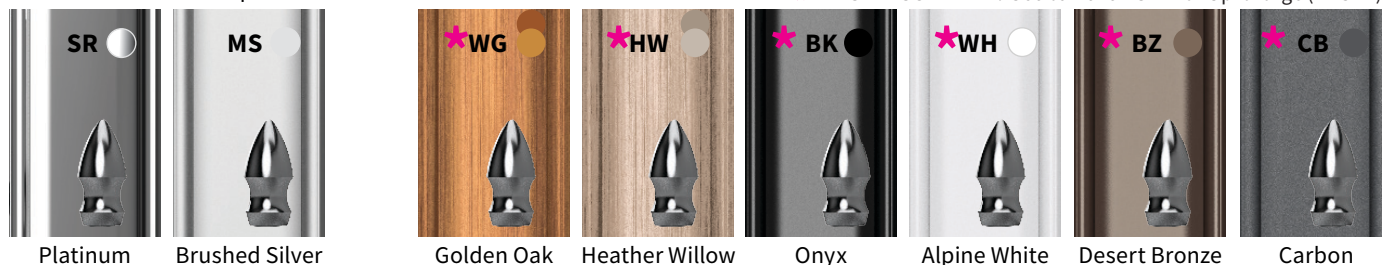
GREENWICH Features/Details

- Smooth and effortless kernmantle rope pulley system.
- Ergonomically designed ribs provide added strength.
- 1.5" dia. x 1/8" thick aluminum center pole.
- Bar height lower poles available. **(Adds 10" to overall clearances and heights.)**
- Stainless steel hardware throughout.
- Stainless steel canopy grommet attachment.
- **Engineered to withstand sustained 30 mph winds.**

Frame Finishes/Finials

Default Finial: Chrome plated **Vertex**.

★ **FINISH DISCLAIMER:** See current MSRP for Up-charge (+MSRP)



Optional Finial

Chrome Plated **Classic ball**.

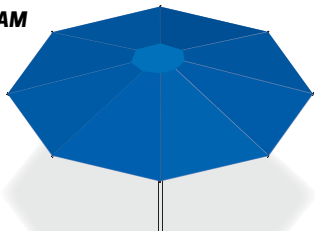


Stainless Steel upgrade (**Vertex & Classic Ball**).

Advertised dimensions have a +/-6" tolerance based on the pitch angle of the umbrella rib, pin placement, and fabric tautness. Base selection will also effect overall heights and clearances.

Please see our "Umbrella Base Guide" on pg. 44 for recommended base options, based on the umbrella size and desired application (table use or free-standing).

845CAM



7.5ft./2.3m Octagon

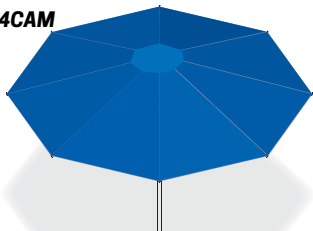
A 70"/177cm

B 44"/111cm

C 94"/238cm

Weight: **20 lbs.**/9 kg.

854CAM



9ft./2.7m Octagon

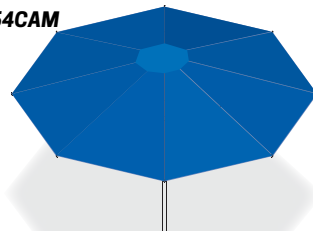
A 76"/193cm

B 42"/106cm

C 102"/259cm

Weight: **22 lbs.** /10 kg.

864CAM



11ft./3.5m Octagon

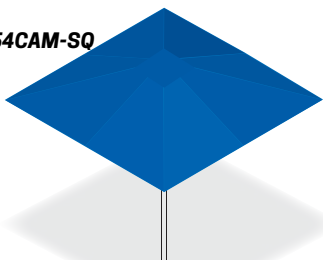
A 82"/208cm

B 40"/101cm

C 108"/274cm

Weight: **26 lbs.** /12 kg.

454CAM-SQ



6.5ft. x 6.5ft./2m Square

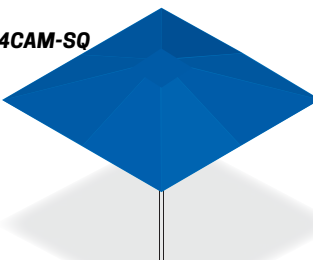
A 76"/193cm

B 42"/106cm

C 102"/259cm

Weight: **18 lbs.**/8.5 kg.

864CAM-SQ



7.5ft. x 7.5ft./2.3m Square

A 82"/208cm

B 40"/101cm

C 108"/274cm

Weight: **24 lbs.** /11 kg.

MONTEREY FM



854FM-BK-R554



MONTEREY FMG



864FMA-WG-R185





MONTEREY FMA



854FMA-WG-R099

Mast Diameter: **1.5"/3.8cm**



FM Pulley Lift Market Umbrella

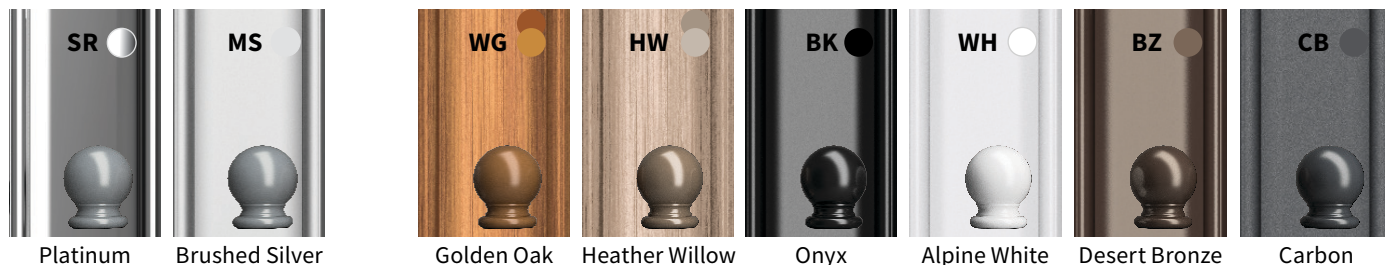
Our easy-glide pulley system is supported by a high strength woven kernmantle rope which allows you to effortlessly open and close the umbrella. All of our pulley lift umbrellas are designed with a hook pin to keep the pulley cord out of reach and out of sight.

MONTEREY-FM Features/Details

- Smooth and effortless kernmantle rope pulley system.
- 1/2" fiberglass ribs and struts for maximum strength and flexibility.
- 1.5" diameter x 1/8" thick center pole provides strength and durability.
- Bar height lower poles available. (**Adds 10" to overall clearances and heights.**)
- Stainless steel hardware throughout.
- 4-layer fabric protection and closed-stitching pocket.
- **Engineered to withstand sustained 40 mph winds.**

Frame Finishes/Finials

Default Finial: TPU matching **Classic Ball**.



Optional Finial

TPU matching **Vertex**.

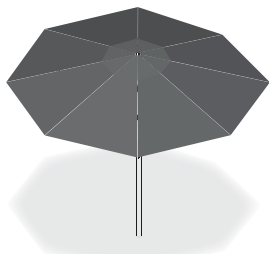


Chrome plated and upgraded stainless steel finials.

Advertised dimensions have a +/-6" tolerance based on the pitch angle of the umbrella rib, pin placement, and fabric tautness. Base selection will also effect overall heights and clearances.

Please see our "Umbrella Base Guide" on pg. 44 for recommended base options, based on the umbrella size and desired application (table use or free-standing).

845FM



7.5ft./2.3m Octagon

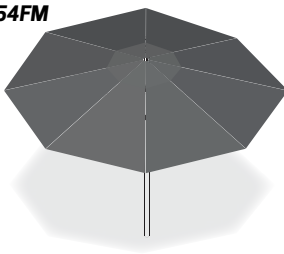
A 70"/177cm

B 44"/111cm

C 94"/238cm

Weight: **20 lbs.**/9 kg.

854FM



9ft./2.7m Octagon

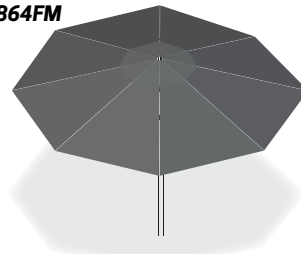
A 76"/193cm

B 42"/106cm

C 102"/259cm

Weight: **22 lbs.** /10 kg.

864FM



11ft./3.5m Octagon

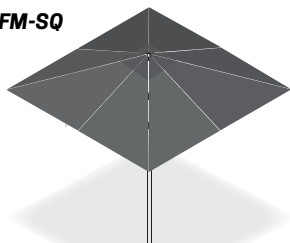
A 82"/208cm

B 40"/101cm

C 108"/274cm

Weight: **26 lbs.** /12 kg.

454FM-SQ



6.5ft. x 6.5ft./2m Square

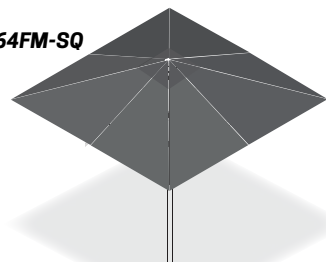
A 76"/193cm

B 42"/106cm

C 102"/259cm

Weight: **18 lbs.**/8.5 kg.

464FM-SQ



7.5ft. x 7.5ft./2.3m Square

A 82"/208cm

B 40"/101cm

C 108"/274cm

Weight: **24 lbs.** /11 kg.

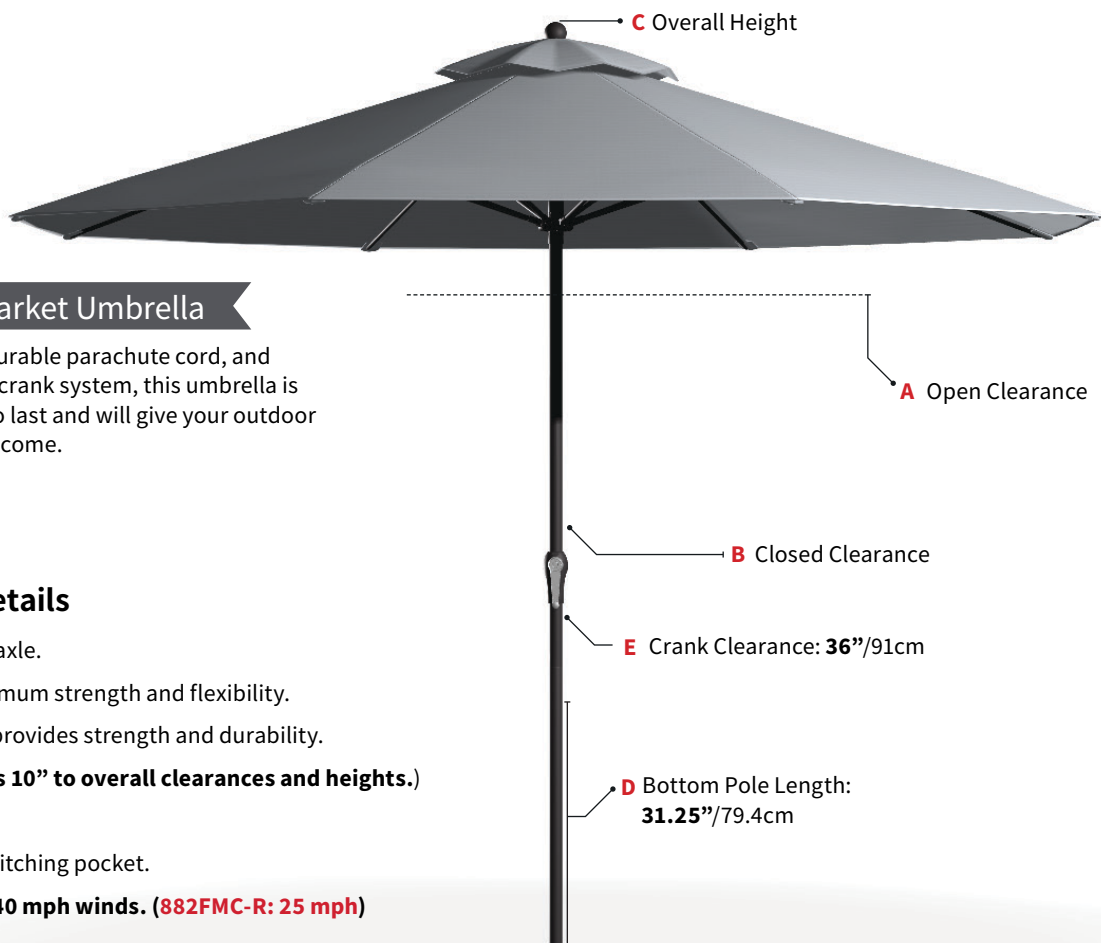
Mast Diameter: **1.5"**/3.8cm

FMC Crank Lift Non-Tilting Market Umbrella

Designed with a stainless steel handle, durable parachute cord, and Frankford's exclusive commercial-grade crank system, this umbrella is truly unique. The Monterey is designed to last and will give your outdoor space a refined, elegant look for years to come.

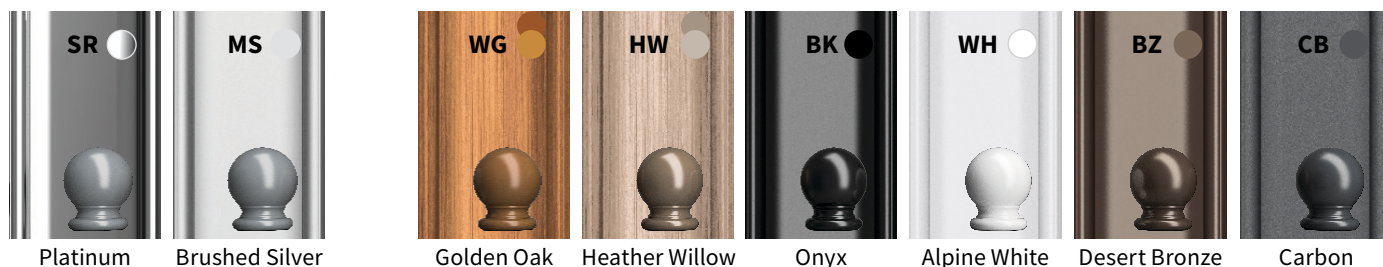
MONTEREY-FMC Features/Details

- 316L Stainless steel crank handle and axle.
- 1/2" fiberglass ribs and struts for maximum strength and flexibility.
- 1.5" diameter x 1/8" thick center pole provides strength and durability.
- Bar height lower poles available. (**Adds 10" to overall clearances and heights.**)
- Stainless steel hardware throughout.
- 4-layer fabric protection and closed-stitching pocket.
- **Engineered to withstand sustained 40 mph winds. (882FMC-R: 25 mph)**



Frame Finishes/Finials

Default Finial: TPU matching **Classic Ball**.



Optional Finial

TPU matching **Vertex**.

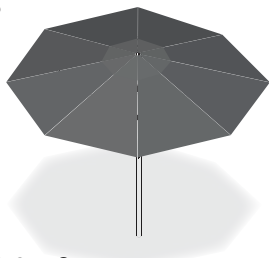


Chrome plated and upgraded stainless steel finials.

Advertised dimensions have a +/-6" tolerance based on the pitch angle of the umbrella rib, pin placement, and fabric tautness. Base selection will also effect overall heights and clearances.

Please see our "Umbrella Base Guide" on pg. 44 for recommended base options, based on the umbrella size and desired application (table use or free-standing).

845FMC



7.5ft./2.3m Octagon

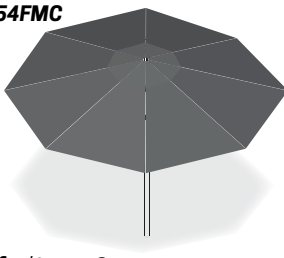
A 72"/182cm

B 49"/124cm

C 98"/248cm

Weight: **18 lbs.**/8.5 kg.

854FMC



9ft./2.7m Octagon

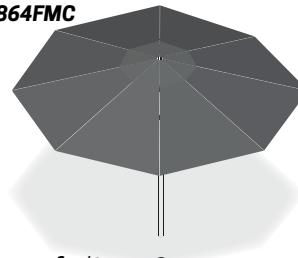
A 79"/200cm

B 48"/121cm

C 107"/271cm

Weight: **20 lbs.** /9 kg.

864FMC



11ft./3.5m Octagon

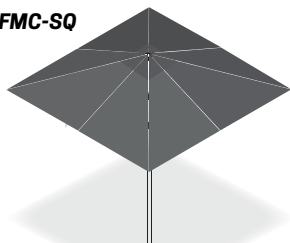
A 87"/221cm

B 41"/104cm

C 107"/271cm

Weight: **24 lbs.** /11 kg.

454FMC-SQ



6.5ft. x 6.5ft./2m Square

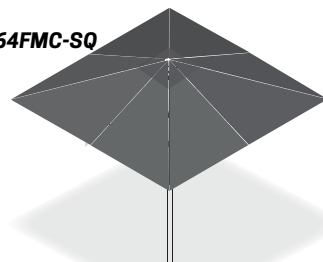
A 79"/200cm

B 48"/121cm

C 107"/271cm

Weight: **16 lbs.**/7 kg.

464FMC-SQ



7.5ft. x 7.5ft./2.3m Square

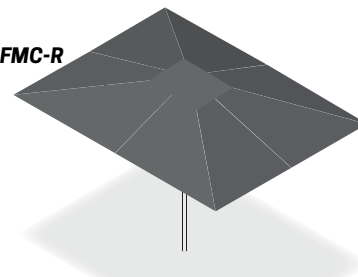
A 87"/221cm

B 41"/104cm

C 107"/271cm

Weight: **21 lbs.** /9.5 kg.

882FMC-R



8.5ft. x 11ft. /2.5m x 3.5m Rectangle

A 94"/238cm

B 31.25"/79.4cm

C 120"/304cm

Weight: **24 lbs.** /11 kg.

Mast Diameter: **1.5"**/3.8cm

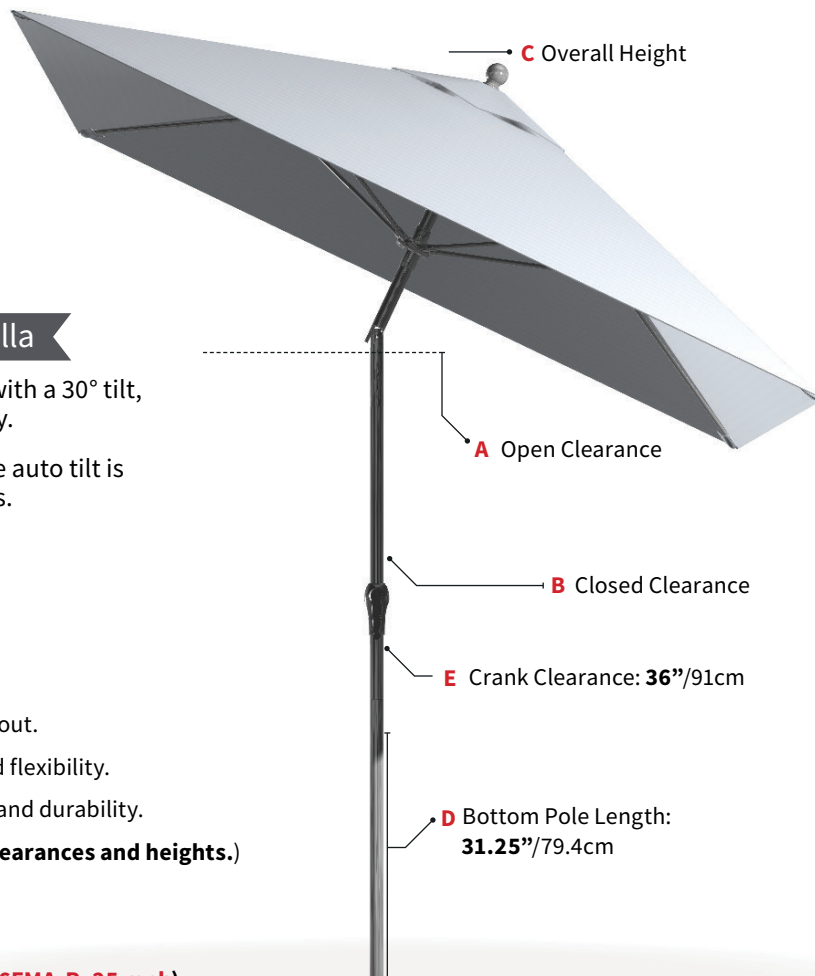
FMA Crank Lift Auto-Tilting Market Umbrella

The Monterey Crank Auto Tilt is an industry favorite with a 30° tilt, this umbrella guarantees shade at any time of the day.

Made of zinc alloy providing exceptional strength, the auto tilt is capable of handling larger canopies and higher winds.

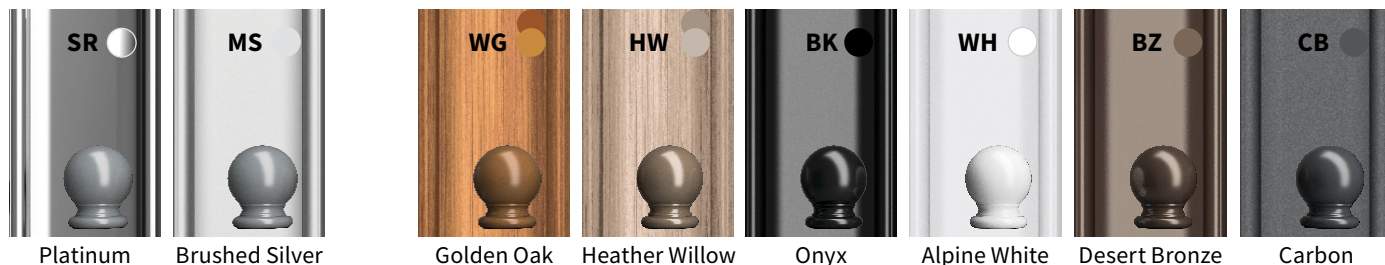
MONTEREY-FMA Features/Details

- 316L Stainless steel crank handle and axle.
- Chrome plated zinc alloy auto tilt. 30° maximum tilt lockout.
- 1/2" fiberglass ribs and struts for maximum strength and flexibility.
- 1.5" diameter x 1/8" thick center pole provides strength and durability.
- Bar height lower poles available. (**Adds 10" to overall clearances and heights.**)
- Stainless steel hardware throughout.
- 4-layer fabric protection and closed-stitching pocket.
- **Engineered to withstand sustained 40 mph winds. (876FMA-R: 25 mph)**



Frame Finishes/Finials

Default Finial: TPU matching **Classic Ball**.



Optional Finial

TPU matching **Vertex**.

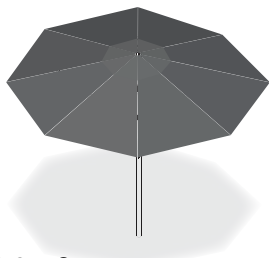


Chrome plated and upgraded stainless steel finials.

Advertised dimensions have a +/-6" tolerance based on the pitch angle of the umbrella rib, pin placement, and fabric tautness. Base selection will also effect overall heights and clearances.

Please see our "Umbrella Base Guide" on pg. 44 for recommended base options, based on the umbrella size and desired application (table use or free-standing).

845FMA



7.5ft./2.3m Octagon

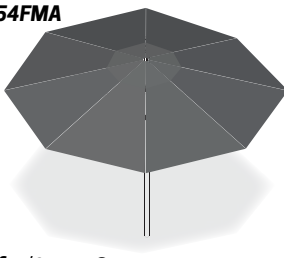
A 72"/182cm

B 49"/124cm

C 98"/248cm

Weight: **20 lbs./9 kg.**

854FMA



9ft./2.7m Octagon

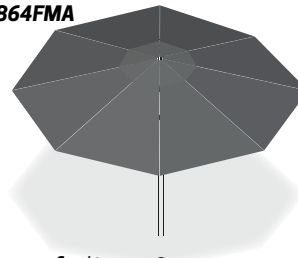
A 79"/200cm

B 48"/121cm

C 107"/271cm

Weight: **22 lbs. /10 kg.**

864FMA



11ft./3.5m Octagon

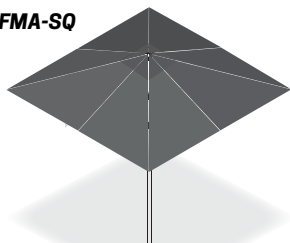
A 87"/221cm

B 41"/104

C 107"/271cm

Weight: **26 lbs. /12 kg.**

454FMA-SQ



6.5ft. x 6.5ft./2m Square

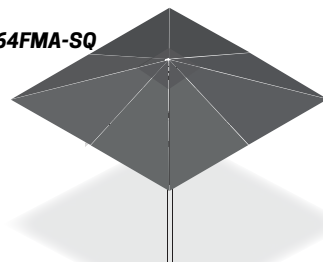
A 79"/200cm

B 48"/121cm

C 107"/271cm

Weight: **18 lbs./8.5 kg.**

464FMA-SQ



7.5ft. x 7.5ft./2.3m Square

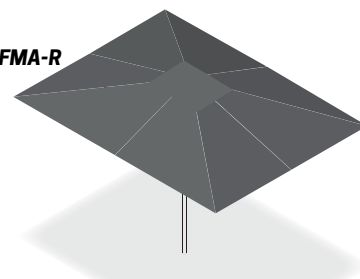
A 87"/221cm

B 41"/104

C 107"/271cm

Weight: **24 lbs. /11 kg.**

876FMA-R



8ft. x 10ft. / 2.4m x 3m

A 88"/223cm

B 39"/99cm

C 107"/271cm

Weight: **28 lbs. /12.7 kg.**

The Recacril® Solution Dying Process



FIBER

Color pigments are applied to the polymer before the fiber is extruded. Therefore, the color is intrinsic; it is in the core of the fiber.



YARN

During the warping and spinning process, the fiber is transformed into Recacril® yarn that is fully dyed. The color does not just remain on the surface, but it is consistent right from the heart of the yarn.



FABRIC

As a result, Recasens' 100% solution-dyed acrylic fabrics have exceptional color retention as well as excellent technical properties and UV and weather resistance.

Solid fabrics have been tested independently in certified labs and found that all colors have a UPF rating of 50+, and most colors have a shade factor of at least 98%.



Technical Specifications

Characteristics

| | |
|--------|------------------------|
| Weight | 9 oz. +/- 5% |
| Finish | Fluorocarbon / Resin |
| Styles | 81 solids / 73 stripes |



100% Solution-Dyed Acrylic Fibers



PHthalATES FREE

LEAD FREE

Specifications

UV Resistance
Abrasion Rating
Hydrostatic
Puncture Strength

Test Results

1,500 + hours
40,000 rubs
40cm
38 lbs.

Test Method

AATCC-16
ASTM-4157
AATCC-127 Method B
ASTM-751

Warp/Weft

Tear Strength
Tensile Strength
Shrinkage
Stretch

11.5 lbs. / 7.7 lbs.
287 lbs. / 149 lbs.
0.10% / 0%
0% / 0%

ASTM D-2261
ASTM D-5034 Grab
Method 5804
ASTM D-2594

GRADES A / A+

The Recacril® and RECsystem® canvases are treated with a special technological process to ensure the lasting quality of the fabric. In this process, nanoparticles completely cover the surface of the fibers in the fabric, forming a permanent coat. After treatment, both the surface and the inside of the fabric are permanently protected against dirt buildup and adverse effects of a wide variety of atmospheric agents. The Infinity treatment's low reactivity and high stability endow long-term protection to the fabric, especially against mildew, and provide excellent water and oil repellency.

Frankford uses only the best. Coats Dabond is a bonded, 250D x 3 ply twisted continuous filament polyester thread that offers excellent protection against UV light and abrasion. It is specifically designed to withstand demanding weather conditions. Dabond is the only environmentally friendly bonded polyester thread available on the market and is excellent at resisting mildew, rot, and the effects of bleaching.

- Tighter weave
- Superior stability
- Unsurpassed fade resistance
- Proprietary Infinity finishing Process
- Long-lasting water resistance
- Stain resistance

Stripes in all fabric grades cannot be used on rectangular canopies.

10
YEAR
RESIDENTIAL

7
YEAR
COMMERCIAL

Frankford Umbrellas stands behind our marine-grade fabrics with our industry-leading commercial and residential warranties.

For full fabric offering, care and cleaning recommendations, and further warranty information, visit frankfordumbrellas.com

EXCLUSIVE U.S. FABRICS

For a full offering of fabrics, please visit frankfordumbrellas.com

GRADE A Stock Fabrics



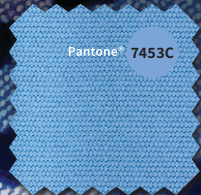
Stripe fabrics can only be sewn horizontally. Stripe fabrics cannot be sewn vertically or used on rectangular canopies.



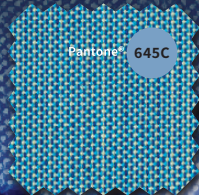
R-175 - Captain Navy



R-172 - Pacific Blue



R-169 - Steel Blue



R-229 - Sapphire



R-171 - Turquoise



R-160 - Pistachio



R-102 - Forest Green



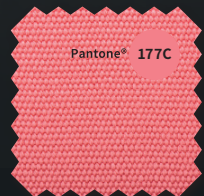
R-177 - Burgundy



R-182 - Vermillion



R-176 - Logo Red



R-105 - Salmon



R-104 - Chestnut



R-567 - Orange



R-185 - Pumpkin



R-554 - Yellow



R-156 - Brown



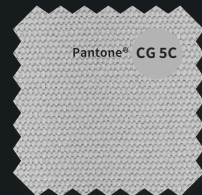
R-100 - Beige



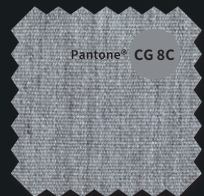
R-126 - Linen



R-099 - White



R-138 - Cadet Grey



R-196 - Titanium



R-164 - Charcoal Grey



R-103 - Black

Stripe Repeat Pattern - 6.4"/16.5cm



R-065 - Navy Stripe



R-016 - Blue Stripe



R-011 - Turquoise Stripe



R-012 - Red Stripe



R-005 - Orange Stripe



R-055 - Yellow Stripe



R-017 - Black Stripe

Pantone® color matches displayed are only suggestions. These are not a 1:1 color match to the fabric and are meant as a tool to help aid in design. Please call to request physical fabric swatches if necessary.

Colors may vary while viewing digitally across different monitors, phone screens, print, etc.

GRADE A

Comparison Fabrics Chart

Sunbrella® and Outdura fabrics may not be an exact match to our stock Recacril® Marine-grade acrylic fabrics. Production shades may vary.



| | | | | | | | | | |
|----------------|------------------|---|---|-------|---------------|---|---|----------------|------|
| 4646/5439/6046 | Captain Navy | ← | • | R-175 | Captain Navy | • | → | Captain's Navy | 6003 |
| 4601/5401/6001 | Pacific Blue | ← | • | R-172 | Pacific Blue | • | → | Pacific Blue | 6002 |
| 4675/5426/6075 | Capri | ← | • | R-169 | Steel Blue | | | | |
| | | | | R-229 | Sapphire | | | | |
| 4612/5416 | Aruba | ← | • | R-171 | Turquoise | • | → | Aruba | 6072 |
| | | | | R-160 | Pistachio | | | | |
| 4637/5446/6037 | Forest Green | ← | • | R-102 | Forest Green | • | → | Forest Green | 6001 |
| 4631/5436/6031 | Burgundy | ← | • | R-177 | Burgundy | • | → | Burgundy | 6004 |
| 4603/5403/6003 | Jockey Red | ← | • | R-182 | Vermillion | • | → | China Red | 6010 |
| 4666/5477/6066 | Logo Red | ← | • | R-176 | Logo Red | • | → | Cardinal Red | 6021 |
| | | | | R-105 | Salmon | | | | |
| 4622/5440 | Terracotta | ← | • | R-104 | Chestnut | • | → | Terracotta | 6035 |
| 4609 | Orange | ← | • | R-567 | Orange | • | → | Tangerine | 6062 |
| 4677/5417 | Tuscan | ← | • | R-185 | Pumpkin | | | | |
| 4602/5457 | Sunflower Yellow | ← | • | R-554 | Yellow | • | → | Dandelion | 6023 |
| 4621/6021 | True Brown | ← | • | R-156 | Brown | • | → | Kona | 6056 |
| 4628/5468/6028 | Toast | ← | • | R-100 | Beige | • | → | Linen | 6025 |
| 4633/5422/6033 | Linen | ← | • | R-126 | Linen | • | → | Antique Beige | 6006 |
| 4604/5404/6004 | Natural | ← | • | R-099 | White | • | → | Natural White | 6009 |
| 4630/6030 | Cadet Grey | ← | • | R-138 | Cadet Grey | • | → | Cadet Grey | 6008 |
| | | | | R-196 | Titanium | | | | |
| | | | | R-164 | Charcoal Grey | • | → | Storm Grey | 6061 |
| 4608/5408/6008 | Black | ← | • | R-103 | Black | • | → | Black | 6005 |

GRADE A+ Non-Stocking Recacril®

A GRADE
A+ GRADE

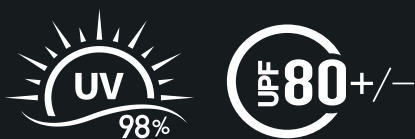
☉ SOLIDS
☉ COMPARISON

STRIPES

● GREY ● YELLOW ● BLUE
● BROWN ● RED ● GREEN

recacril®
DESIGN LINE

| | | | | | | | | | | | |
|----|---|-------|---------------|----|---|-------|---------------|----|---|-------|------------------|
| A+ | ● | R-051 | Manhattan | A+ | ☉ | R-193 | Light Blue | A+ | ● | R-355 | Daró |
| A+ | ● | R-052 | Brooklyn | A+ | ☉ | R-194 | Ash | A+ | ● | R-356 | Rupit |
| A+ | ● | R-054 | Queens | A+ | ☉ | R-195 | Cacao | A+ | ● | R-362 | Menor |
| A+ | ● | R-060 | Bronx | A+ | ☉ | R-197 | Lead Tweed | A+ | ● | R-363 | Congost |
| A+ | ● | R-061 | Grey Stripe | A+ | ☉ | R-198 | Nickel | A+ | ● | R-365 | Freser |
| A+ | ● | R-063 | Bayside | A+ | ☉ | R-199 | Atlantic Blue | A+ | ● | R-411 | Montornés |
| A+ | ● | R-086 | Concord | A+ | ☉ | R-217 | Ivory | A+ | ● | R-412 | Motril |
| A+ | ● | R-089 | Glendale | A+ | ☉ | R-220 | Argent | A+ | ☉ | R-415 | Marble |
| A+ | ● | R-094 | Prati | A+ | ☉ | R-222 | Oak Buff | A+ | ● | R-416 | Nerja |
| A+ | ● | R-097 | Trastevere | A+ | ☉ | R-224 | Dun Grey | A+ | ● | R-419 | Ronda |
| A+ | ● | R-098 | Trevi | A+ | ☉ | R-232 | Denim | A+ | ● | R-422 | Mojacar |
| A+ | ☉ | R-101 | Mandarin | A+ | ☉ | R-236 | Jeans | A+ | ● | R-423 | Cambrils |
| A+ | ☉ | R-106 | Flamingo | A+ | ☉ | R-237 | Pineapple | A+ | ● | R-425 | Luarca |
| A+ | ☉ | R-107 | Champagne | A+ | ☉ | R-239 | Yellow Tweed | A+ | ● | R-428 | Gandia |
| A+ | ☉ | R-108 | Vanilla | A+ | ☉ | R-240 | Honey | A+ | ● | R-430 | Bará |
| A+ | ☉ | R-110 | Lilly | A+ | ☉ | R-241 | Phoenix | A+ | ● | R-434 | Dalias |
| A+ | ☉ | R-111 | Camel | A+ | ☉ | R-243 | Tapenade | A+ | ● | R-437 | Doñana |
| A+ | ☉ | R-112 | Graphite | A+ | ☉ | R-244 | Dun | A+ | ● | R-445 | Tona |
| A+ | ☉ | R-112 | Cava | A+ | ● | R-245 | Navia | A+ | ● | R-447 | Reus |
| A+ | ☉ | R-114 | Pearl | A+ | ● | R-247 | Manacor | A+ | ● | R-465 | Grecia |
| A+ | ☉ | R-115 | Cream | A+ | ☉ | R-248 | Hunter | A+ | ● | R-701 | Yecla |
| A+ | ☉ | R-117 | Raw | A+ | ● | R-278 | Westminster | A+ | ● | R-706 | Xàtiva |
| A+ | ☉ | R-119 | Duna | A+ | ● | R-280 | Midwood | A+ | ● | R-707 | Aridane |
| A+ | ☉ | R-121 | Wheat | A+ | ● | R-282 | Pelham | A+ | ● | R-720 | Mijas |
| A+ | ☉ | R-122 | Seashell | A+ | ☉ | R-292 | Teal | A+ | ● | R-723 | Javea |
| A+ | ☉ | R-123 | Argenta Grey | A+ | ☉ | R-293 | Argent Tweed | A+ | ● | R-747 | Begur |
| A+ | ☉ | R-127 | Moonrock | A+ | ☉ | R-294 | Ice Tweed | A+ | ☉ | R-769 | Baltic Tweed |
| A+ | ☉ | R-133 | Cinnamon | A+ | ☉ | R-295 | Honey Tweed | A+ | ☉ | R-770 | Charcoal Tweed |
| A+ | ☉ | R-139 | Heather Beige | A+ | ☉ | R-296 | Lagoon | A+ | ☉ | R-772 | Blue Tweed |
| A+ | ☉ | R-142 | Emerald | A+ | ☉ | R-297 | Brunette | A+ | ☉ | R-774 | Smoke Tweed |
| A+ | ☉ | R-143 | Hemp Beige | A+ | ☉ | R-298 | Coal | A+ | ☉ | R-775 | Linen Tweed |
| A+ | ● | R-144 | Maella | A+ | ☉ | R-300 | Oat | A+ | ☉ | R-776 | Taupe Tweed |
| A+ | ☉ | R-145 | Tenerife | A+ | ☉ | R-313 | Iguana Tweed | A+ | ☉ | R-779 | Beige Tweed |
| A+ | ☉ | R-148 | Desert | A+ | ☉ | R-314 | Maple | A+ | ☉ | R-791 | Beige Slub Tweed |
| A+ | ☉ | R-149 | Corn | A+ | ☉ | R-317 | Beech | A+ | ☉ | R-792 | Taupe Slub Tweed |
| A+ | ☉ | R-150 | Dark Grey | A+ | ● | R-321 | Gracia | A+ | ☉ | R-793 | Linen Slub Tweed |
| A+ | ☉ | R-152 | Taupe | A+ | ● | R-322 | Bonanova | A+ | ☉ | R-794 | Sand Slub Tweed |
| A+ | ☉ | R-161 | Grey | A+ | ● | R-323 | Born | A+ | ● | R-804 | Mérida |
| A+ | ☉ | R-162 | Khaki | A+ | ● | R-324 | Valls | A+ | ● | R-806 | Arucas |
| A+ | ☉ | R-163 | Green | A+ | ● | R-325 | Aviá | A+ | ● | R-808 | Orotava |
| A+ | ☉ | R-165 | Mauve | A+ | ● | R-326 | Cercs | A+ | ● | R-812 | Inca |
| A+ | ● | R-166 | Foix | A+ | ● | R-327 | Móstoles | A+ | ● | R-843 | Breda |
| A+ | ● | R-167 | Tarifa | A+ | ● | R-328 | Sants | A+ | ● | R-854 | Jumilla |
| A+ | ☉ | R-170 | Admiral Blue | A+ | ● | R-343 | Tormes | A+ | ● | R-855 | Torcal |
| A+ | ☉ | R-173 | Dark Blue | A+ | ● | R-345 | Odíel | A+ | ● | R-874 | Llivia |
| A+ | ☉ | R-174 | Navy Blue | A+ | ● | R-346 | Tambre | A+ | ● | R-876 | Galdana |
| A+ | ☉ | R-178 | Toast | A+ | ● | R-348 | Ulla | A+ | ☉ | R-911 | Baltic |
| A+ | ☉ | R-180 | Sand | A+ | ● | R-349 | Cabriel | A+ | ● | R-960 | Almenara |
| A+ | ☉ | R-181 | Coffee | A+ | ● | R-350 | Sella | A+ | ● | R-969 | Valdespina |
| A+ | ☉ | R-186 | Silver | A+ | ● | R-351 | Arga | A+ | ● | R-971 | Trujillo |
| A+ | ☉ | R-187 | Jade | A+ | ● | R-352 | Segre | | | | |
| A+ | ☉ | R-188 | Lemon | A+ | ● | R-353 | Muga | | | | |



Stripe fabrics can only be sewn horizontally. Stripe fabrics cannot be sewn vertically or used on rectangular canopies.

Geometric, Floral, Paisley, Novelty, Plaids, Animal Print, Chevrons, or Abstract patterns cannot be sewn in a continuous repeat. A new repeat will begin on each adjacent panel.

All stripe patterns in GRADE A+ can be ordered as single pieces. If fabrics are not found, please call for quotation.

GRADE A+

Comparison Fabrics Chart

Frankford Grade A+ Recacril® fabrics include, but are not limited to, the colors below. All non-stocking Grade A+ fabrics carry extended lead times.



| | | | | | | |
|-----------------|------------------|---|-------|----------------|---|-------------------------|
| 4651/6051 | Silver | ← | R-114 | Pearl | | |
| 4642/5453/6042 | Oyster | ← | R-117 | Raw | → | Sand 6034 |
| 4648/5461/6048 | Taupe | ← | R-127 | Moonrock | → | Taupe 6026 |
| 4672/5476/6072 | Heather Beige | ← | R-139 | Heather Beige | | |
| 4645 | Seagrass Green | ← | R-142 | Emerald | → | Emerald 6065 |
| 4620/6020 | Beige | ← | R-143 | Hemp Beige | | |
| 4678/6078 | Marine Blue | ← | R-170 | Admiral Blue | → | Royal Navy 6022 |
| 4679/5499/6079 | Ocean Blue | ← | R-173 | Dark Blue | → | Classic Royal Blue 6041 |
| 4688 | Basil | ← | R-187 | Jade | | |
| 4615 | Smoke | ← | R-194 | Ash | | |
| 4644/54048/6044 | Charcoal Grey | ← | R-198 | Nickel | | |
| 5415 | Melon | ← | R-241 | Phoenix | | |
| 4676/5425 | Cocoa | ← | R-243 | Tapenade | | |
| 4652/6052 | Med. Blue | ← | R-911 | Baltic | | |
| 4643/5456/6043 | Persian Green | ← | R-292 | Teal | → | Oz Green 6016 |
| 4653/6053 | Med. Blue Tweed | ← | R-769 | Baltic Tweed | | |
| 4607/6007 | Charcoal Tweed | ← | R-770 | Charcoal Tweed | → | Tuxedo Tweed 6047 |
| 4617/6017 | Royal Blue Tweed | ← | R-772 | Blue Tweed | → | Catalina Blue 6014 |
| 4654/6054 | Linen Tweed | ← | R-775 | Linen Tweed | → | Desert Beige 6032 |

BASE AND MOUNTS POWDER COATS/FINISH GUIDE

| FINISH AVAILABLE | | MATERIAL FINISH | | | | | | | | | |
|-------------------|---|--|-------------|------------|----------------|------|--------------|---------------|--------|------------------------------|-----------------|
| FINISH DISCLAIMER | | See current MSRP for Upcharge (+MSRP) | | | | | | | | | |
| | | MS | SM | WG | HW | BK | WH | BZ | CB | MS | |
| | | BRUSHED SILVER SATIN ANODIZED | SILVER MIST | GOLDEN OAK | HEATHER WILLOW | ONYX | ALPINE WHITE | DESERT BRONZE | CARBON | BRUSHED SILVER RESIN PIGMENT | MATERIAL FINISH |
| RESIN COATED | | | | | | | | | | | |
| 50C | | | | | | ✓ | ✓ | ✓ | ✓ | ✓ | |
| 23 | | | | | | ✓ | ✓ | ✓ | ✓ | ✓ | |
| ALUMINUM SHELLS | | Stainless Steel Stem must be chosen and paired with this base. (8ST / 18ST / 18ST-2). | | | | | | | | | |
| 100A | | ✓ | ✓* | ✓* | ✓* | ✓* | ✓* | ✓* | ✓* | | |
| 150A | | ✓ | ✓* | ✓* | ✓* | ✓* | ✓* | ✓* | ✓* | | |
| STEEL PLATES | | | | | | | | | | | |
| 50S | | ✓ | | | | ✓ | ✓ | ✓ | ✓ | | |
| 75S | | ✓ | | | | ✓ | ✓ | ✓ | ✓ | | |
| 100S | | ✓ | | | | ✓ | ✓ | ✓ | ✓ | | |
| GALVANIZED STEEL | | Stainless Steel Stem must be chosen for Centerpost Umbrellas and paired with this base. (8ST / 18ST / 18ST-2). | | | | | | | | | |
| 24G | | | | | | | | | | | ● |
| 30G | | | | | | | | | | | ● |
| 36G | | | | | | | | | | | ● |
| 40G | | | | | | | | | | | ● |
| 20G-SQ | | | | | | | | | | | ● |
| 24G-SQ | | | | | | | | | | | ● |
| 36G-SQ | | | | | | | | | | | ● |
| WHEEL BASE | | Stainless Steel Stem must be chosen for Centerpost Umbrellas and paired with this base. (8ST / 18ST / 18ST-2). | | | | | | | | | |
| 480-L | ✓ | | | | | ✓* | ✓* | ✓* | ✓* | | |
| PAVER BASES | | | | | | | | | | | |
| XB+C | | ✓ | | | | ✓ | | | | | |
| NGU550-L | ✓ | | | | | ✓* | ✓* | ✓* | ✓* | | |
| SPECIALTY MOUNTS | | | | | | | | | | | |
| DP | | ✓ | | | | ✓ | | | | | ●* |
| IG | | | | | | | | | | | ● |
| BZ/BZ2 | | ✓ | | | | | | | | | ●* |
| CMLK | | ✓ | | | | | | | | | ●* |
| 38SAP/2 | ✓ | | | | | | | | | | |

UMBRELLA BASE GUIDE

Recommendations by Application and Umbrella

TABLE USE

Suitable for use beneath a table. It is not recommended as a free-standing base option.

FREE-STANDING USE

Recommended as a free-standing option, but can also be suitable for use beneath a table if the table provides enough clearance.

1.5" STEM (8ST / 18ST)

Indicates the base can accommodate an 1.5"/38mm center pole.

2" STEM (18ST-2)

Indicates the base can accommodate a 2"/50mm center pole.

| | 7.5ft. / 2.3m Oct. | 9ft. / 2.7m Oct. | 11ft. / 3.5m Oct. | 13ft. / 4m Oct. | 8.5ft. x 11ft. / 2.5m x 3.5m Rec. 882FMC | 6.5ft. x 6.5ft. / 2m Sq. | 7.5ft. x 7.5ft. / 2.3m Sq. | 10ft. x 10ft. / 3m Sq. | 8ft. x 10ft. / 2.4m x 3m Rec. | 8.5ft. x 11ft. / 2.5m x 3.5m Rec. |
|-------------------------|--------------------|------------------|-------------------|-----------------|---|--------------------------|----------------------------|------------------------|-------------------------------|-----------------------------------|
| RESIN COATED | | | | | | | | | | |
| 50C | ● ● | ● ● | ● ● | | ● ● | ● ● | ● ● | | ● ● | |
| 23 | ● ● | ● ● | ● ● | | ● ● | ● ● | ● ● | | ● ● | |
| ALUMINUM SHELLS | | | | | | | | | | |
| 100A | ● ● ● | ● ● ● | ● ● | | ● ● ● | ● ● ● | ● ● | | ● ● | |
| 150A | ● ● ● | ● ● ● | ● ● ● | ● ○ | ● ● ● | ● ● ● | ● ● ● | ● ○ | ● ● ● | ● ○ |
| STEEL PLATES | | | | | | | | | | |
| 50S | ● ● | ● ● | ● ● | | ● ● | ● ● | ● ● | | ● ● | |
| 75S | ● ● | ● ● | | | | ● ● | | | | |
| 100S (wheels) | ● ● | ● ● | ● ● | | ● ● | ● ● | ● ● | | ● ● | |
| GALVANIZED STEEL | | | | | | | | | | |
| 24G | ● ● ● | ● ● | ● ● | | ● ● | ● ● ● | ● ● | | ● ● | |
| 30G | ● ● ● | ● ● ● | ● ● ● | | ● ● | ● ● ● | ● ● ● | | ● ● ● | |
| 36G | ● ● | ● ● | ● ● | ● ○ | ● ● | ● ● | ● ● | ● ○ | ● ● | ● ○ |
| 40G | ● ● | ● ● | ● ● | ● ○ | ● ● | ● ● | ● ● | ● ○ | ● ● | ● ○ |
| 20G-SQ | ● ● | ● ● | ● ● | | | ● ● | ● ● | | ● ● | |
| 24G-SQ | ● ● ● | ● ● ● | ● ● | | ● ● | ● ● ● | ● ● | | ● ● | |
| 36G-SQ | ● ● | ● ● | ● ● | ● ○ | ● ● ● | ● ● | ● ● | ● ○ | ● ● | ● ○ |
| WHEEL BASE | | | | | | | | | | |
| 480 | ● ● | ● ● | ● ● | ● ○ | ● ● | ● ● | ● ● | ● ○ | ● ● | ● ○ |

Bases have a +/- 10 lbs. (4.5 kg.) tolerance based on a variety of variables. Dimensions +/- 1-2".

Your Shade Is Only As Good As Its Foundation

Frankford umbrellas are all thoroughly tested and built to ensure durability and longevity; however, we do not recommend the use of any non-permanent umbrella in unsafe wind conditions. The size and installation location of your umbrella play a significant role when selecting the base/anchoring method required for safe operation. Please consult an authorized Frankford Dealer or factory representative directly for recommendations.

Umbrellas must be secured in a base equal to or greater than the options recommended in this catalog and must be secured properly using the thumb screws or other hardware supplied with each base. Failure to properly secure umbrellas with the base options recommended, and with the supplied hardware will void the Frankford Umbrellas warranty. Furthermore, all umbrellas should always be closed and secured when not in use and taken down when winds reach unsafe conditions.

BASES / MOUNTS Pgs. 46-48

Guide to shade anchoring solutions

Properly securing your umbrella is crucial to ensuring years of sun protection and longevity. The following section will guide you through our wide variety of everyday bases and anchoring solutions. These included options are suitable for use beneath a table or in a free-standing setting.

SPECIALTY MOUNTS Pg. 49

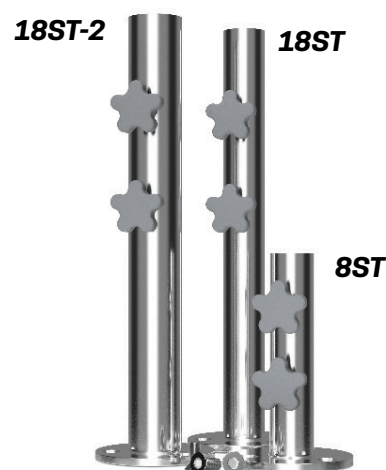
Direct Surface and In-Ground Mounting Options For Center Post Umbrellas

Choose your stem with your base.

Frankford offers three stainless steel stem options to pair with your **Galvanized Plate/Stack** selection and **Premium Aluminum Shell Bases (100A, 150A)**, and the **480** paver weighted base.

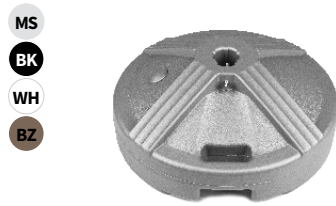
Stainless steel stems are not available in powder coat finishes.

- **8ST:** 8"/20cm • 1.5"/3.8cm
- **18ST:** 18"/45cm • 1.5"/3.8cm
- **18ST-2:** 18"/45cm • 2"/5cm



Bases have a +/- 10 lbs. (4.5 kg.) tolerance based on a variety of variables. Dimensions +/- 1-2".

Resin Coated Concrete



50C Resin Table Base

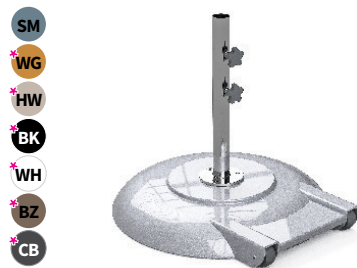
- Weight: **50lbs.**/22 kg.
- Dimensions: **16"**/40cm • **6"**/15cm
- **1.5"** / 3.8cm Diameter Umbrella Pole
- Table Use



23 Resin Base Table/Free-Standing

- Weight: **80 lbs.**/36 kg.
- Dimensions: **20"**/50cm • **11.5"**/30cm
- **1.5"** / 3.8cm Diameter Stem
- Table Use

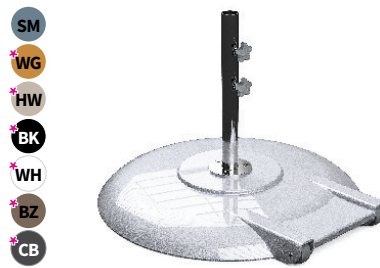
Premium Aluminum Shell



100A Premium Aluminum

- Weight: **100 lbs.** / 45 kg.
- Dimensions: **24"** / 61cm • **3.5"** / 9cm
- Free-Standing Use (**18ST** / **18ST-2**)
- Table Use (**8ST** / **8ST-2**)

Aluminum, concrete-filled shell with rear hooded wheels. Must be paired with a stem.

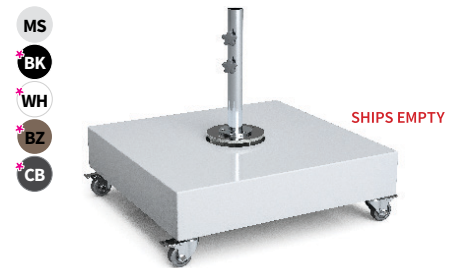


150A Premium Aluminum

- Weight: **150 lbs.**/68kg.
- Dimensions: **30"**/76cm • **3.5"**/9cm
- Free-Standing Use (**18ST** / **18ST-2**)
- Table Use (**8ST** / **8ST-2**)

Aluminum, concrete-filled shell with rear hooded wheels. Must be paired with a stem.

Aluminum Cover/Paver Weighted



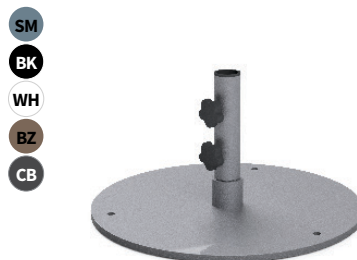
480 Base (includes wheels and feet)

- Weight: **80 lbs.**/36 kg.
- Dimensions: **34"**/86cm • **6.5"**/16.5cm
- Wheels increase height **5"**/12.7cm
- Powder Coated Aluminum Cover
- Free-Standing Use

PAVERS NOT INCLUDED

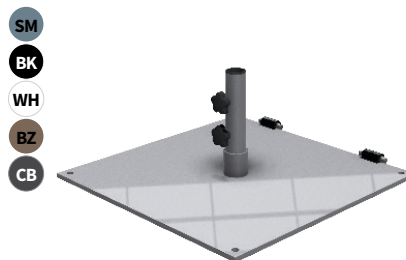
(12) 16" x 16" Pavers (35 lbs. Min ea.)
+/- 20 lbs. minimum **480 lbs.**/217 kg.

Steel Plate



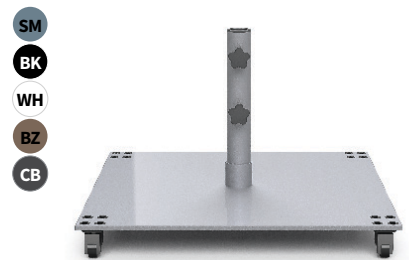
50S Steel Plate Base

- Weight: **50lbs.**/22 kg.
- Dimensions: **20"**/50cm • **11"**/28cm
- **1.5"**/3.8cm Diameter Stem
- Table Use



75S Steel Plate Wheel Base

- Weight: **75 lbs.**/34 kg.
- Dimensions: **24"**/61cm • **16.5"**/42cm
- **1.5"** / 3.8cm Diameter Stem
- Free-Standing



100S Steel Plate Wheel Base

- Weight: **100 lbs.**/45 kg.
- Dimensions: **29.25"**/74cm • **19"**/48cm
- **1.5"** / 3.8cm Diameter Stem
- Free-Standing w/ wheels

Galvanized Steel Plates Bases

★ **FINISH DISCLAIMER:** See current MSRP for Up-charge (+MSRP)

Bases have a +/- 10 lbs. (4.5 kg.) tolerance based on a variety of variables. Dimensions +/- 1-2".

We recommend to consult a licensed professional before installing all in-ground and direct surface installations.



24G Round Galvanized Steel Plate ●

- Weight: **70 lbs.**/32 kg.
- Dimensions: **24"**/61cm • **.5"**/12.7mm
- Table Use
- Add **24G-TC**

Can be stacked up to three (3) plates. Must be paired with a stem.



30G Round Galvanized Steel Plate ●

- Weight: **100 lbs.**/45 kg.
- Dimensions: **30"**/76cm • **.5"**/12.7mm
- Free-Standing or Table Use
- Add **30G-TC**

Can be stacked up to three (3) plates. Must be paired with a stem.



36G Round Galvanized Steel Plate ●

- Weight: **150 lbs.**/68 kg.
- Dimensions: **36"**/91cm • **.5"**/12.7mm
- Free-Standing Use
- Add **36G-TC**

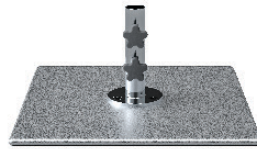
Can be stacked up to three (3) plates. Must be paired with a stem.



40G Round Galvanized Steel Plate ●

- Weight: **185 lbs.**/83 kg.
- Dimensions: **40"**/101cm • **.5"**/12.7mm
- Free-Standing Use
- Add **40G-TC**

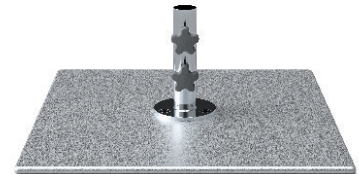
Can be stacked up to three (3) plates. Must be paired with a stem.



20G-SQ Galvanized Steel Base ●

- Weight: **70 lbs.**/32 kg.
- Dimensions: **20"**/50cm • **.5"**/12.7mm
- Table Use
- Add **20G-SQ-TC**

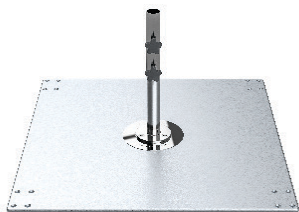
Cannot be stacked.
Must be paired with a stem.



24G-SQ Galvanized Steel Base ●

- Weight: **100 lbs.**/45 kg.
- Dimensions: **24"**/61cm • **.5"**/12.7mm
- Free-Standing or Table Use
- Add **24G-SQ-TC**

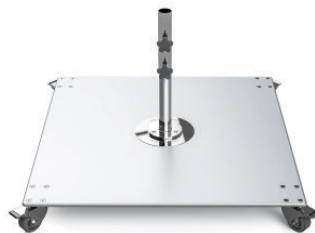
Cannot be stacked.
Must be paired with a stem.



36G-SQ Galvanized Steel Base ●

- Weight: **200 lbs.**/90 kg.
- Dimensions: **36"**/91cm • **.5"**/12.7mm
- Free-Standing Use
- Add **36G-SQ-TC**

Can be stacked up to three (3) plates. Must be paired with a stem.



36G-SQ+W Galvanized Steel Base ●

- Weight: **214 lbs.**/97 kg.
- Dimensions: **36"**/91cm • **5"**/12.7cm
- Free-Standing Use **+W** (wheels)
- Add **36G-SQ-TC**

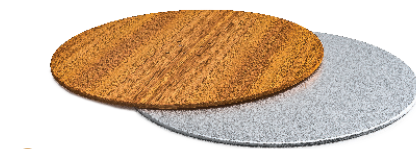
Can be stacked up to three (3) plates. Must be paired with a stem.

GAL. PLATE TOP COVERS

The profile, the weight, the aesthetic. Details matter.

24G / 30G / 36G / 40G

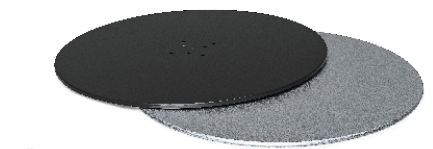
Round Galvanized Plate Top Covers



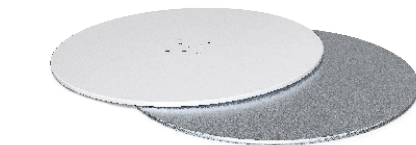
WG **WG** Golden Oak



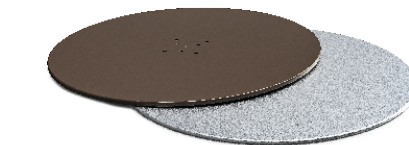
HW **HW** Heather Willow



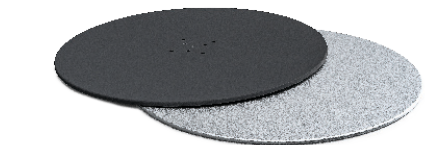
BK **BK** Onyx



WH **WH** Alpine White



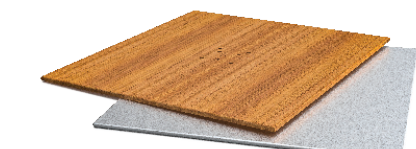
BZ **BZ** Desert Bronze



CB **CB** Carbon

20G-SQ / 24G-SQ / 36G-SQ

Square Galvanized Plate Top Covers



WG **WG** Golden Oak



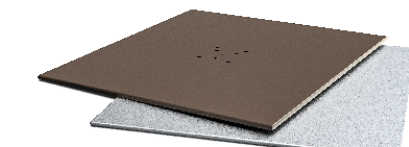
HW **HW** Heather Willow



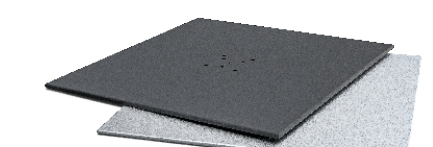
BK **BK** Onyx



WH **WH** Alpine White



BZ **BZ** Desert Bronze



CB **CB** Carbon

Specialty Mounts

★ **FINISH DISCLAIMER:** See current MSRP for Up-charge (+MSRP)

Bases have a +/- 10 lbs. (4.5 kg.) tolerance based on a variety of variables. Dimensions +/- 1-2".

We recommend to consult a licensed professional before installing all in-ground and direct surface installations.

SM



CMLK-SM Surface Mounting Stem

- Weight: **9 lbs.**/4 kg.
- Dimensions: **18"**/45cm • **4"**/10cm
- **1.5"**/3.8cm Diameter Stem

Surface mounting plate installation with attachable 18" Stem.

Installation hardware not included.

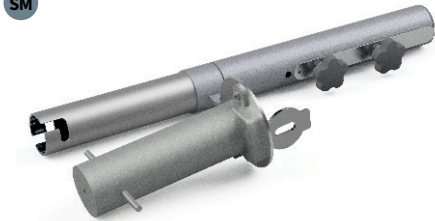
SS★



CMLK-SS Surface Mounting Stem

- **SS Upgrade** ★

SM

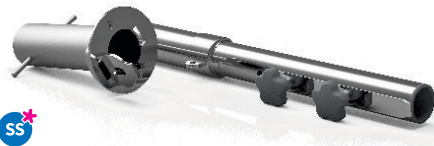


BZ/BZ2-SM In-Ground Mounting Stem

- Weight: **11 lbs.**/5 kg.
- Stem: **16"**/40cm • **1.5"**/3.8cm or **2"**/5cm
- In-Ground: **8.5"**/21cm

In-ground sleeve installation with removable stem.

SS★



BZ/BZ2-SS In-Ground Mounting Stem

- **SS Upgrade** ★

MS



38SAP Soft Surface Anchor

- Weight: **4 lbs.**/1.8 kg.
- Dimensions: **27"**/68cm
- **1.5"**/3.8cm Diameter Umbrella

1.5" Aluminum sand anchor sleeve. Can be used with all 1.5" diameter aluminum and wooden bottom poles.

Customer must drill a hole to accommodate hitch pin.

MS



38SAP-2 Soft Surface Anchor

- Weight: **4 lbs.**/1.8 kg.
- Dimensions: **38"**/96cm
- **2"**/5cm Diameter Umbrella

2" Aluminum sand anchor sleeve. Only to be used with all G-Series Greenwich and Monterey.

Customer must drill a hole to accommodate hitch pin.

8ST/18ST/18ST-2 Stems •

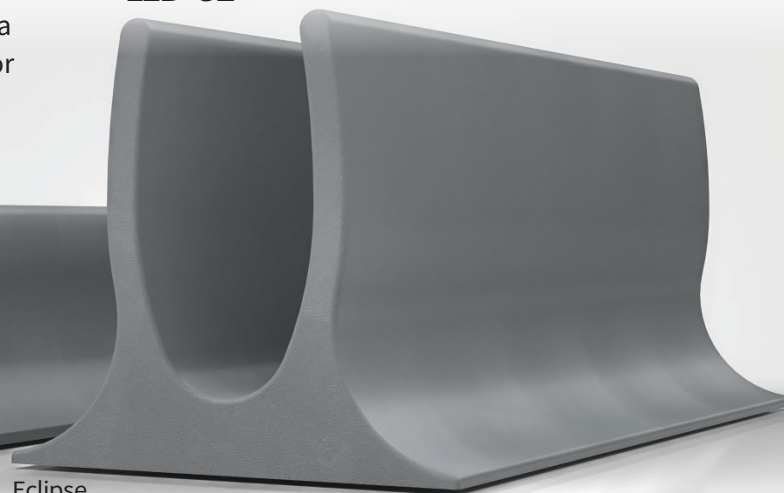
- 8ST: **8"**/20cm • **1.5"**/3.8cm
- 18ST: **18"**/45cm • **1.5"**/3.8cm
- 18ST-2: **18"**/45cm • **2"**/5cm

Stainless steel stems are not available in any finish other than Polished Stainless Steel.

LED CLIPS

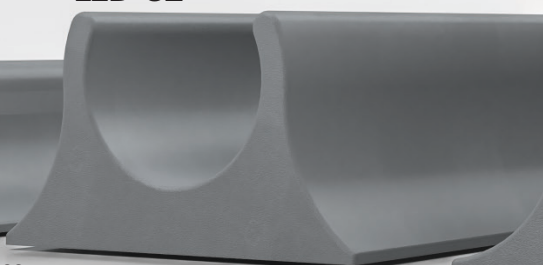
When the sun sets, you no longer need to close your umbrella just yet. Light up your resort, restaurant or cherished outdoor space with Frankford's new LED Lighting and LED Clips specifically designed for all umbrella collections.

LED-C1



Eclipse
Aurora Aluminum
G-Series Greenwich
Greenwich

LED-C2



Aurora Fiberglass
G-Series Monterey

LED-C3

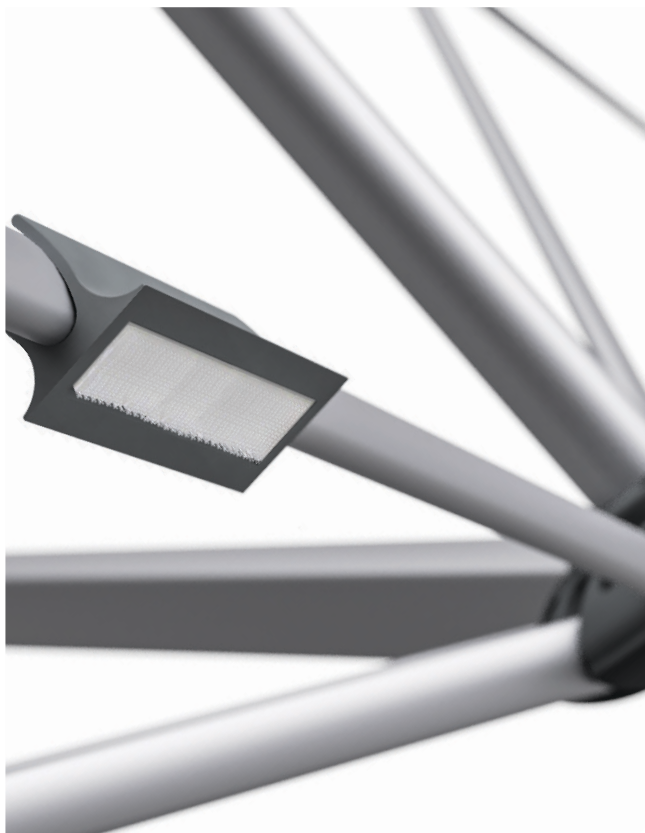
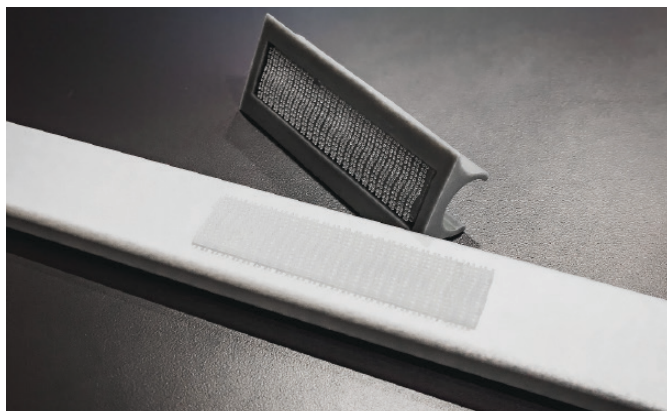


Monterey Fiberglass

MOTION SENSOR SLIM LED LIGHT

Stylish and functional Ultra thin LED lights paired with the low-profile clip allows them to remain when closing the umbrella.

- 5000K Temp @ 320 Lumens Max
- 17.25"L x 1.5"W x .5"H
- DC5V/3W/**4400mAh** Lithium Battery (28hrs at low power / 12hrs Full Power)



RESIDENTIAL WARRANTIES

As a condition of doing business with Frankford Umbrellas, all persons involved in the commercial purchase, sale, or resale of Frankford products shall be bound by the following terms and conditions.

DISTRIBUTION - Frankford reserves the right to respond to geographic and individual market and competitive situations by applying different policies to its various Dealers. Frankford also reserves the right to rescind or modify, in its sole and absolute discretion, any existing or future sales program or policy, or credit terms (if any) extended to a Dealer. In addition, Frankford may terminate any authorized Dealer, for any reason or no reason, in its sole and absolute discretion and without notice.

ERRORS - There may be errors in the prices, descriptions, or images of certain merchandise in our catalog or sales material. Frankford reserves the right to restrict orders of those items.

LIABILITY - In no event will Frankford be liable to the Dealer for any lost profits, lost savings, or any consequential, incidental, or special damages arising out of or in connection with the parties' relationship, even if Frankford has been put on notice of the possibility of such damages. Without limitation to the foregoing, under no circumstances will Frankford be liable to the Dealer for punitive damages.

Frankford reserves the right to alter or modify designs, product styles, or product specifications and discontinue frames and fabrics to the entire range of manufactured and distributed products without prior notice.

WIND DAMAGE - Wind ratings do not form part of, nor fall under, any of Frankford Umbrellas' warranties. Wind ratings are intended as a guide to the relative strength of the umbrellas only and tested at their optimal positions. Umbrellas with any degree of tilt added should not follow any wind ratings on pg. 45. Wind can be extremely variable, depending on the surroundings, elevation, gusts, etc. In high wind or sudden extreme weather conditions, all umbrellas should be closed and secured immediately, regardless of size, weight, or base weight and never be left unattended or tilted in the open position.

Frankford will not be held responsible for damage to your umbrella, furniture, or property. Frankford Umbrellas' **2025 MSRP** and **Catalog** contain minimum recommendations for necessary weight, but this can vary depending on conditions.

ELEVATED/ROOFTOP - Warranties and published wind ratings do not apply to any umbrella on a rooftop or an elevated patio above the ground level of the property.

10-YEAR FABRIC - Frankford offers 9 oz. marine-grade solution-dyed acrylic fabric from several mills, including Sunbrella®, Outdura®, and RECASENS. All marine-grade acrylic fabrics we use carry a warranty of 10 years from the original date of purchase. All upholstery-grade fabrics we use carry a warranty of 5 years from the original date of purchase. The warranty protects against the significant loss of strength and color in normal atmospheric conditions. The product must be properly installed, maintained, and under normal use and environment. This warranty does not cover damage caused by contact with foreign objects, abuse, negligence, vandalism, burns of any kind, improper cleaning techniques, normal wear, perforations, weather soiling, environmental pollution stains, natural disasters, rot, mildew, or acts of nature. Damage caused by the storage method or location used by clients is not covered. To ensure our products' longevity, we recommend closing your umbrella and securing it with a tie band in high winds. In addition, be sure the fabric is pulled away from the ribs as outlined below. High winds will cause the umbrella fabric to rub together, causing friction, which can result in premature thinning of the fabric, discoloration, and possible pinholes over extended use. We strongly suggest the use of a protective cover or safely storing the umbrella until the winds and harsh weather subside. Damage of this nature is not covered under warranty.

When opening and closing the umbrella, the user must be sure all fabric is pulled away from the ribs to prevent unnecessary rubbing of the fabric against the frame or hardware. This could result in premature wearing or holes in the fabric. Damage of this nature is not covered under warranty.

The warranty, if applicable, does not cover labor frames, systems, or installation supplied by the dealer or reseller. The replacement fabric canopy is covered for the time remaining in the original warranty and does not activate a new 10-year or 5-year warranty.

5-YEAR FRAME - Frankford warrants the crank and auto tilt mechanisms in the **MONTEREY** for a period of 5 years from the original date of purchase. This warranty includes manufacturer defects of crank handles, crank axles, auto tilts, push-button tilts, and para-cord. Frankford warrants the frame structure of the **ECLIPSE®, AURORA, NOVA, G-SERIES, GREENWICH, MONTEREY, CATALINA,** and **AVALON** for a period of 5 years from the original date of purchase. This warranty includes manufacturer defects to the notch, runner, center pole, and skeleton structure. This warranty does not include damages sustained to these umbrellas if operated improperly, while in any degree of tilt, or if left unattended.

Before opening any umbrella, gently "fluff" the umbrella ribs (spread them apart by hand) first, and then begin to open the umbrella. If you feel any impingement whatsoever during opening, halt opening and repeat this process until there is no more resistance.

3-YEAR POWDER COAT/FINISH - Frankford warrants all powder coat finishes on aluminum masts in **ECLIPSE®, AURORA, NOVA, G-SERIES, GREENWICH, MONTEREY, CATALINA,** and **LAUREL** for a period of 3 years from the original date of purchase. This warranty includes chipping, peeling, flaking, bubbling, and fading of the powder coat finish on the aluminum masts only.

1-YEAR FRAME/STRUCTURE - Frankford warrants the frame structure of the **LAUREL, EMERALD COAST, FC101, SHADE STAR, LIFEGUARD,** and **CB87** for a period of 1 year from the original date of purchase. This warranty includes manufacturer defects to the notch, runner, center pole, and skeleton structure. Frankford warrants all umbrella bases for a period of one 1 year from the original date of purchase.

1-YEAR UMBRELLA BASE - Frankford warranty covers manufacturing defects only. It does not cover breakage due to contact with foreign objects, chipping of the finishes, crumbling of concrete, or any damage associated with transporting the base.

3-YEAR FIBERGLASS RIB REPLACEMENT - Non warrantable damage to fiberglass ribs from the **MONTEREY** collection, Frankford offers a free replacement program for 3 years from the original date of purchase. Shipping charges are not included in this program.

RUST - is a natural part of the aging process for all steel and iron-based materials; therefore it is not considered a defect and is not covered under any of Frankford Umbrellas' warranties. Steel bases and mounts are designed to require minimum maintenance and should be kept clean and well maintained.

Galvanized steel will show unavoidable imperfections due to the finishing process and therefore, must be accepted in the condition in which it is received.

SEASIDE AND INDOOR/OUTDOOR POOL USE - Salt and chlorides can accumulate on the powder coat finishes and on raw material finishes, such as Brushed Silver (**MS**) (umbrella specific) and Platinum (**SR**), leading to premature finish failure. Failure or neglect to make needed cleanings on powder coat finishes may cause paint to blister, flake, or bubble, and such failure will void the limited warranty. Failure to maintain umbrella and base finishes may cause aluminum and metals to pit, oxidize, or corrode. Such failure will void all warranties.

Frankford Umbrellas' warranties do not cover damage to any umbrellas or umbrella bases related to extreme weather, abuse, misuse, or any damage that occurs as a result of contact with the ground or any other foreign object due to sudden and severe weather events or other extreme acts of nature.

Frankford Umbrellas' warranties are only applicable to products that are properly secured to Frankford bases or anchoring systems equal to or greater than recommended by Frankford. Failure to properly secure Frankford Umbrellas to Frankford bases equal to or greater than recommended will void all warranties. If warrantable damage occurs, Frankford will refinish, replace, or repair any item in this category at its own discretion.

COMMERCIAL WARRANTIES

As a condition of doing business with Frankford Umbrellas, all persons involved in the commercial purchase, sale, or resale of Frankford products shall be bound by the following terms and conditions.

DISTRIBUTION - Frankford reserves the right to respond to geographic and individual market and competitive situations by applying different policies to its various Dealers. Frankford also reserves the right to rescind or modify, in its sole and absolute discretion, any existing or future sales program or policy, or credit terms (if any) extended to a Dealer. In addition, Frankford may terminate any authorized Dealer, for any reason or no reason, in its sole and absolute discretion and without notice.

ERRORS - There may be errors in the prices, descriptions, or images of certain merchandise in our catalog or sales material. Frankford reserves the right to restrict orders of those items.

LIABILITY - In no event will Frankford be liable to the Dealer for any lost profits, lost savings, or any consequential, incidental, or special damages arising out of or in connection with the parties' relationship, even if Frankford has been put on notice of the possibility of such damages. Without limitation to the foregoing, under no circumstances will Frankford be liable to the Dealer for punitive damages.

Frankford reserves the right to alter or modify designs, product styles, or product specifications and discontinue frames and fabrics to the entire range of manufactured and distributed products without prior notice.

WIND DAMAGE - Wind ratings do not form part of, nor fall under, any of Frankford Umbrellas' warranties. Wind ratings are intended as a guide to the relative strength of the umbrellas only and tested at their optimal positions. Umbrellas with any degree of tilt added should not follow any wind ratings on pg. 45. Wind can be extremely variable, depending on the surroundings, elevation, gusts, etc. In high wind or sudden extreme weather conditions, all umbrellas should be closed and secured immediately, regardless of size, weight, or base weight and never be left unattended or tilted in the open position.

Frankford will not be held responsible for damage to your umbrella, furniture, or property. Frankford Umbrellas' **2025 MSRP** and **Catalog** contain minimum recommendations for necessary weight, but this can vary depending on conditions.

ELEVATED/ROOFTOP - Warranties and published wind ratings do not apply to any umbrella on a rooftop or an elevated patio above the ground level of the property.

7-YEAR FABRIC - Frankford offers 9 oz. marine-grade solution-dyed acrylic fabric from several mills, including Sunbrella®, Outdura®, and RECASSENS. All marine-grade acrylic fabrics we use carry a warranty of 7 years from the original date of purchase. All upholstery-grade fabrics we use carry a warranty of 5 years from the original date of purchase. The warranty protects against the significant loss of strength and color in normal atmospheric conditions. The product must be properly installed, maintained, and under normal use and environment. This warranty does not cover damage caused by contact with foreign objects, abuse, negligence, vandalism, burns of any kind, improper cleaning techniques, normal wear, perforations, weather soiling, environmental pollution stains, natural disasters, rot, mildew, or acts of nature. Damage caused by the storage method or location used by clients is not covered. To ensure our products' longevity, we recommend closing your umbrella and securing it with a tie band in high winds. In addition, be sure the fabric is pulled away from the ribs as outlined below. High winds will cause the umbrella fabric to rub together, causing friction, which can result in premature thinning of the fabric, discoloration, and possible pinholes over extended use. We strongly suggest the use of a protective cover or safely storing the umbrella until the winds and harsh weather subside. Damage of this nature is not covered under warranty.

When opening and closing the umbrella, the user must be sure all fabric is pulled away from the ribs to prevent unnecessary rubbing of the fabric against the frame or hardware. This could result in premature wearing or holes in the fabric. Damage of this nature is not covered under warranty.

The warranty, if applicable, does not cover labor frames, systems, or installation supplied by the dealer or reseller. The replacement fabric canopy is covered for the time remaining in the original warranty and does not activate a new 10-year or 5-year warranty.

2-YEAR CRANK MECHANISM - Frankford warrants the crank mechanisms in the **MONTEREY** for a period of 2 years from the original date of purchase. This warranty includes manufacturer defects of crank handles, crank axles, and para-cord.

3-YEAR FRAME - Frankford warrants the frame structure of the **ECLIPSE®**, **AURORA**, **NOVA**, **G-SERIES**, **GREENWICH**, **MONTEREY**, **CATALINA**, and **AVALON** for a period of 3 years from the original date of purchase. This warranty includes manufacturer defects to the notch, runner, center pole, and skeleton structure. This warranty does not include damages sustained to these umbrellas if operated improperly, while in any degree of tilt, or if left unattended.

Before opening any umbrella, gently "fluff" the umbrella ribs (spread them apart by hand) first, and then begin to open the umbrella. If you feel any impingement whatsoever during opening, halt opening and repeat this process until there is no more resistance.

3-YEAR POWDER COAT/FINISH - Frankford warrants all powder coat finishes on aluminum masts in **ECLIPSE®**, **AURORA**, **NOVA**, **G-SERIES**, **GREENWICH**, **MONTEREY**, **CATALINA**, and **LAUREL** for a period of 3 years from the original date of purchase. This warranty includes chipping, peeling, flaking, bubbling, and fading of the powder coat finish on the aluminum masts only.

1-YEAR FRAME/STRUCTURE - Frankford warrants the frame structure of the **LAUREL**, **EMERALD COAST**, **FC101**, **SHADE STAR**, **LIFEGUARD**, and **CB87** for a period of 1 year from the original date of purchase. This warranty includes manufacturer defects to the notch, runner, center pole, and skeleton structure. Frankford warrants all umbrella bases for a period of one 1 year from the original date of purchase.

1-YEAR UMBRELLA BASE - Frankford warranty covers manufacturing defects only. It does not cover breakage due to contact with foreign objects, chipping of the finishes, crumbling of concrete, or any damage associated with transporting the base.

RUST - is a natural part of the aging process for all steel and iron-based materials; therefore it is not considered a defect and is not covered under any of Frankford Umbrellas' warranties. Steel bases and mounts are designed to require minimum maintenance and should be kept clean and well maintained.

Galvanized steel will show unavoidable imperfections due to the finishing process and therefore, must be accepted in the condition in which it is received.

SEASIDE AND INDOOR/OUTDOOR POOL USE - Salt and chlorides can accumulate on the powder coat finishes and on raw material finishes, such as Brushed Silver (**MS**) (umbrella specific) and Platinum (**SR**), leading to premature finish failure.

Failure or neglect to make needed cleanings on powder coat finishes may cause paint to blister, flake, or bubble, and such failure will void the limited warranty.

Failure to maintain umbrella and base finishes may cause aluminum and metals to pit, oxidize, or corrode. Such failure will void all warranties.

Frankford Umbrellas' warranties do not cover damage to any umbrellas or umbrella bases related to extreme weather, abuse, misuse, or any damage that occurs as a result of contact with the ground or any other foreign object due to sudden and severe weather events or other extreme acts of nature.

Frankford Umbrellas' warranties are only applicable to products that are properly secured to Frankford bases or anchoring systems equal to or greater than recommended by Frankford. Failure to properly secure Frankford Umbrellas to Frankford bases equal to or greater than recommended will void all warranties. If warrantable damage occurs, Frankford will refinish, replace, or repair any item in this category at its own discretion.

SHIPPING / RETURNS

GROUND / FREIGHT DELIVERIES - Frankford would like to ensure the highest level of service. All of our products are made to order and shipped directly from us to you. Because of this, shipping times often vary depending on what product is ordered, what fabric is used (Grades **A** or **A+**, **B-F**), the quantity ordered, and the time of year the order is placed.

All small package and small quantity orders will be shipped using parcel companies (USPS, UPS, FedEx, or other) unless otherwise specified. Some of our larger items and larger quantity shipments must be shipped with an LTL trucking company. Additional charges may be incurred for the following services: Lift Gate Service, Residential Delivery, Call Before Delivery, Express Delivery, Weekend/Holiday Delivery, Guaranteed Delivery, Redelivery, Change of Address, for exceeding delivery window.

Frankford will not be responsible for any express shipping costs or order cancellations unless we have guaranteed a specific delivery date in writing. No verbal guarantees will be honored. customer is responsible for additional charges added at the time of delivery (Inside Delivery, Lift Gate, Change of Address, etc.). **FREIGHT QUOTES ARE ONLY VALID FOR 14 DAYS.**

Frankford is not responsible for duties, taxes or providing a broker for International LTL shipments. This is the sole responsibility of the end-user or dealer.

SCHEDULING - Deliveries may be disrupted by natural disasters and other factors beyond our control. In these cases, Frankford shall not be liable for any damages caused by a failure to deliver or delays in delivery.

Orders may be delayed due to lack of information on order form. Information includes, but is not limited to, shipping address, company/contact name, phone number, shipping method/instructions, item number/description. Frankford will not be responsible for charges incurred due to lack of information provided. For shipping quotes/inquiries, email a customer service representative.

CANCELLATIONS - No cancellations, changes, additions, or holds will be accepted on any order for which materials have been ordered or produced.

- Cancellations and/or changes of product or shipping dates on **EARLY BUY** orders must be received in writing within 15 days of the order date.
- Cancellations and/or changes of product or shipping dates on **ALL OTHER** orders must be received in writing within 1 business day of the order date.

SHORTAGES - It is the Dealer's/customer's responsibility to inspect all merchandise and to file a claim with the carrier in the event of product shortage. Make a notation on the Bill of Lading as to the number of cartons short. Frankford must also be notified within 24 hours of any shortages. File the claim with the delivery carrier immediately. No claim for shortages, damaged items, or errors will be honored unless it is made in writing on the Bill of Lading immediately upon receipt of shipment. Notwithstanding anything to the contrary in this agreement, failure to make a claim on the Bill of Lading will constitute a waiver of any right to a refund or credit.

In addition, it is the Dealer's/customer's responsibility to inspect all merchandise to ensure they have received the correct product, fabric colors and frame finishes. Any discrepancies must be reported in writing within 48 hours of receipt.

CONCEALED DAMAGE - If damage is discovered when unpacking the merchandise, immediately mark the damaged area and submit a written request for the carrier to inspect.

- Do not remove the merchandise from the original carton until the carrier inspection is complete.
- If the merchandise was shipped using Frankford's carrier and account, it is the Dealer's/customer's responsibility to notify Frankford immediately and to provide all proper documentation so that a claim can be filed.

VISIBLE DAMAGE - It's Dealer's/customer's responsibility to check the merchandise for visible damage and file a claim with the carrier if the shipment was made using the dealer's carrier account. Request a claim form from the delivering carrier and file your claim immediately.

- **DO NOT REFUSE DAMAGED SHIPMENTS.**

- If the shipment was made using Frankford's carrier and account, it is the Dealer's/customer's responsibility to check the merchandise and notify Frankford Umbrellas within 24 hours of delivery so that a claim can be filed.
- In either situation, make a notation on the Bill of Lading as to the nature and extent of the damage, take photos, check carton count, and obtain a signature from the carrier's agent.
- Failure to provide this information within 24 hours of delivery may result in the carrier refusing to honor the claim, and Frankford will not, under this circumstance, be liable for damage sustained in transit.

PURCHASER/CLIENT TRANSIT AND INSTALLATION - Frankford is not responsible or liable for any damages that occur during transit to a customer's home or any location by the purchaser or third-party delivery services.

- Frankford is not responsible or liable for any damages incurred when the customer is transporting their product from the location of purchase to their home.
- Frankford is not responsible or liable for mechanical damages incurred during installation before the product is fully installed and operational.
- Frankford, under no circumstances, will be responsible for punitive damages to persons or property due to an improper or faulty installation.

GRADE A RETURNS - All requests for returns of stock merchandise must be made within 7 days of receipt of merchandise. Returns will not be accepted without a written Return Authorization (RA#) from the factory. It is the Dealer's/customer's responsibility to follow routing instructions. Please fax/email a request for an RA#. Your request must include the following information:

- Company name, contact name and number.
- The Frankford Umbrellas invoice and/or acknowledgment.
- The item number., number of units to be returned, and carton total
- The reason for the return.
- Which carrier will be returning the items and the date of the shipment.

Any stock item that is returned for credit is subject to a 25% restocking fee (and must be properly packaged and in resalable condition) plus inbound and outbound freight charges.

PLEASE NOTE: **ECLIPSE®, AURORA, NOVA, G-SERIES**, and **GREENWICH** are considered custom orders. Returns will not be accepted.

GRADE A+/B-F RETURNS - Umbrellas made with Grade A+ through F fabrics and/or that have printing are not subject to a refund or credit. These items are manufactured or printed to the Dealer's/customer's specifications, and as such, may not be returned. No cancellations, changes, additions, or holds will be accepted on any order for which materials have been ordered or produced.

NOTE: **ECLIPSE®, AURORA, NOVA, G-SERIES**, and **GREENWICH** are considered custom orders. Returns will not be accepted.

CARE AND MAINTENANCE

FABRIC CARE - Recacril® 9 oz. marine-grade acrylic fabric is treated with the Infinity Process, a highly technological finish providing Recacril® with long-lasting protection against mold and mildew, excellent water and oil repellency, and protection from the sun. However, the accumulation of dust, pollution particles, foreign organic materials, and general dirt can damage this protection, shortening the life of the Recacril®.

The most effective method for maintaining Recacril® is to clean the canvas once a month with water, using a low-pressure hose. It is very important that after cleaning with water, the canvas be allowed to completely dry before rolling or storing your umbrella. If for any reason you must roll and/or store a wet umbrella, it must be unrolled and opened as soon as possible to dry. In times of continuous rain, it is advisable to keep the umbrella rolled and stored.

If periodic washing with water is done, in most environments, you should only need to do a more thorough cleaning every 2-3 years.

FABRIC CRAZING/MARBLING - Crazing is an inherent characteristic of all solution-dyed acrylic fabrics and is caused by folding or creasing of the fabric during production or installation.

- Crazing lines appear as white lines on dark-colored fabrics when frontlit, and dark lines on light-colored fabrics when backlit. The primary contributors to crazing are the resins added in the final stages of manufacturing. These resins add stiffness so the fabric lies flat during sewing, which is critical for the manufacturing process.
- These resins can be viewed as an industrial fabric starch with a specific end purpose. Crazing does not affect the performance or characteristics of RECASENS, Sunbrella®, Outdura®, or other acrylic fabrics. The fabric remains water repellent as well as stain and mildew resistant, and the lines will diminish over time with exposure to the elements.

CASUAL CARE/CLEANING

- Brush off dust and dirt with a soft brush. NEVER brush with stiff brushes since this can damage the fabric finish.
- Spray the umbrella with clean water. If a hose is used, avoid high pressure.
- Prepare a solution of solvent-free soap in warm water (no more than 100°F) and apply it to the fabric and stitching.
- Scrub with a soft brush, allowing the solution to penetrate the fabric.
- Rinse with water to remove all traces of soap.
- Let air dry and do not close the umbrella until canvas is completely dry.

INTENSIVE CARE/CLEANING - Recacril® is highly resistant to the growth of fungus, mold, and mildew. However, these can grow on embedded dirt. To clean these stains, follow these more intensive cleaning procedures.

- Brush off dust and dirt with a soft brush. NEVER brush with stiff brushes as this can damage the fabric finish.
- Prepare a solution with 10% household bleach, 20% solvent-free neutral detergent (free & clear detergents), and 70% water.
- Apply the solution to the fabric, allowing it to remain between 15 and 20 minutes maximum.
- Rinse with clean water several times. Any bleach residues remaining on the canvas, combined with the sun, could damage the fabric and stitching.
- Let air dry and do not close the umbrella until canvas is completely dry.
- Repeat the process if necessary.

BASE CARE - Do not let dirt build up on the bases. Bases should be cleaned with mild soap and water. Seasonal touch-up of any scratches, chips, occasional rust seepage from crevices, or hidden or unfinished surfaces inherent in some designs is all that is required. Never leave bases standing in water. To keep your bases looking their best, you may wish to store them when not in use for an extended period of time.

Finishes will vary slightly depending on the final process and raw materials on which they are applied.

POWDER COATED STEEL BASE/STEM - Upon receiving your powder coated steel base and/or mount, apply a rust inhibitor to the inside of the steel stem. The stems are powder coated steel; however, the inside of the stem lacks total coverage, exposing the raw steel and accelerating natural deterioration.

PREVENTIVE MAINTENANCE PRO TIP: Ferrous metals are naturally in the air and can adhere and etch in to any surface. These small particles can rust on the surface giving an unsightly look. To combat this, before setting up your base, rinse with clean, fresh water, towel dry or air dry, and apply WD-40 Specialist Long-Term Corrosion Inhibitor to the entirety of the base. Repeat this twice a year to ensure the longevity of your base.

Periodically hose powder coated steel bases, steel umbrella stems, and steel mounts with warm, fresh water and a mild detergent. This should be a part of a weekly routine to ensure the longevity of all steel products.

VISUAL RUST - If you notice rust stains, rinse the steel product with warm water and a mild detergent to determine its origin. Once the damaged area has been discovered, scrub off the visible rust using warm water, white vinegar, and a stainless steel wire brush (steel wire brushes will leave further iron deposits on the surface).

Once rust (orange oxidation) is visibly gone, apply a thin coat of Rust-Oleum® Stops Rust® Rust Inhibitor Spray to the affected area. Then apply the closest-matching Rust-Oleum® paint available at your local hardware store.

Rusty water stains may appear from rusting ferrous metal deposits on the surface, not the actual product. The most common place this would occur is from the umbrella stem/threads. Remove the stem and clean with warm, fresh water; white vinegar; and a soft sponge or brush. Dry off with a towel, apply WD-40 Specialist Long-Term Corrosion Inhibitor to the threads of the umbrella stem and female receiving cup of the stem.

VINYL CARE - The most effective method for maintaining Frankford's heavy-gauge vinyl is to clean the vinyl once a month with water, using a garden hose to prevent the accumulation of dust, pollution particles, foreign organic materials, and general dirt stains. For more embedded stains, brush the loose dirt away with a soft brush and rinse the vinyl with a garden hose. Use a vinyl cleaner, sponge, and lukewarm water to scrub away stubborn stains. Do not use dish detergent as this will dry out the vinyl and expedite the aging process of the vinyl material.

CLEANING ABS PLASTICS - Frankford uses electroplating on our plastic crank boxes for Brushed Silver (**MS**) and Platinum (**SR**) finishes. This is to protect the plastic parts from corrosion. The plating process will also increase the wear resistance and strength of the product. To clean these specific finishes, follow the methods below.

TOOTHPASTE - Removes light scuffs and cloudiness.

- Spread a thin layer of opaque white (no gel) toothpaste on the surface of the chrome plating. Rub the toothpaste with a soft, clean cloth in small circular and swirling patterns (little to no force).
- Using a fresh, dry cloth or microfiber, wipe away the toothpaste, revealing a shiny, clean surface.

WHITE VINEGAR - General Cleaning.

- Pour undiluted distilled white vinegar in to a spray bottle and begin to spray the surface until saturated.
- Using a fresh, dry cloth or microfiber, wipe while simultaneously buffing away the vinegar.

SHADE DESIGNER

The Shade Designer™ is an immersive 3D digital space that allows you to design your own umbrella and interact with your unique creation. Choose from hundreds of fabrics colors and patterns, multiple canopy styles, and finishing additions like various trim styles and custom binding.



FRANKFORD
exceptional shade

2025



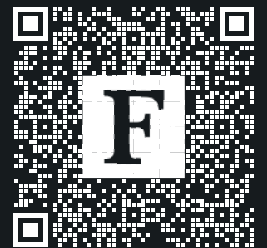
MONTEREY FIBERGLASS MARKET

9ft. Octagon Fiberglass Market Umbrella • 1.5" Diameter Pole-Pulley Lift / **SR** - Platinum Anodized Finish

BF - Classic Ball Finial

Recasens® R-099 White (**GRADE A**) / Recasens® R-175 Navy Blue (**GRADE A**) 9oz. Marine Grade Acrylic Fabric

Mounting: **100A-SM** - 100 lbs. Aluminum Concrete Filled Base w/Wheels in Silver Mist Powder Coat Finish



Visit our Shade Designer



AURORA PREMIUM ALUMINUM CANTILEVER

11ft. Octagonal Premium Aluminum Cantilever Umbrella / **MS** - Brushed Silver Finish
Recasens® R-099 White (**GRADE A**) 9oz. Marine Grade Acrylic Fabric
Mounting: **XB+C-SM** - Aurora Specific Modular Cross Base w/ Cover (**SM** - Silver Mist)



868ARU-MS-R099



FRANKFORD

e x c e p t i o n a l s h a d e

We are confident you will become a customer for life.



110 Gaither Dr.
Mount Laurel, NJ 08054
P: 856.222.4134
frankfordumbrellas.com

@frankfordshade

